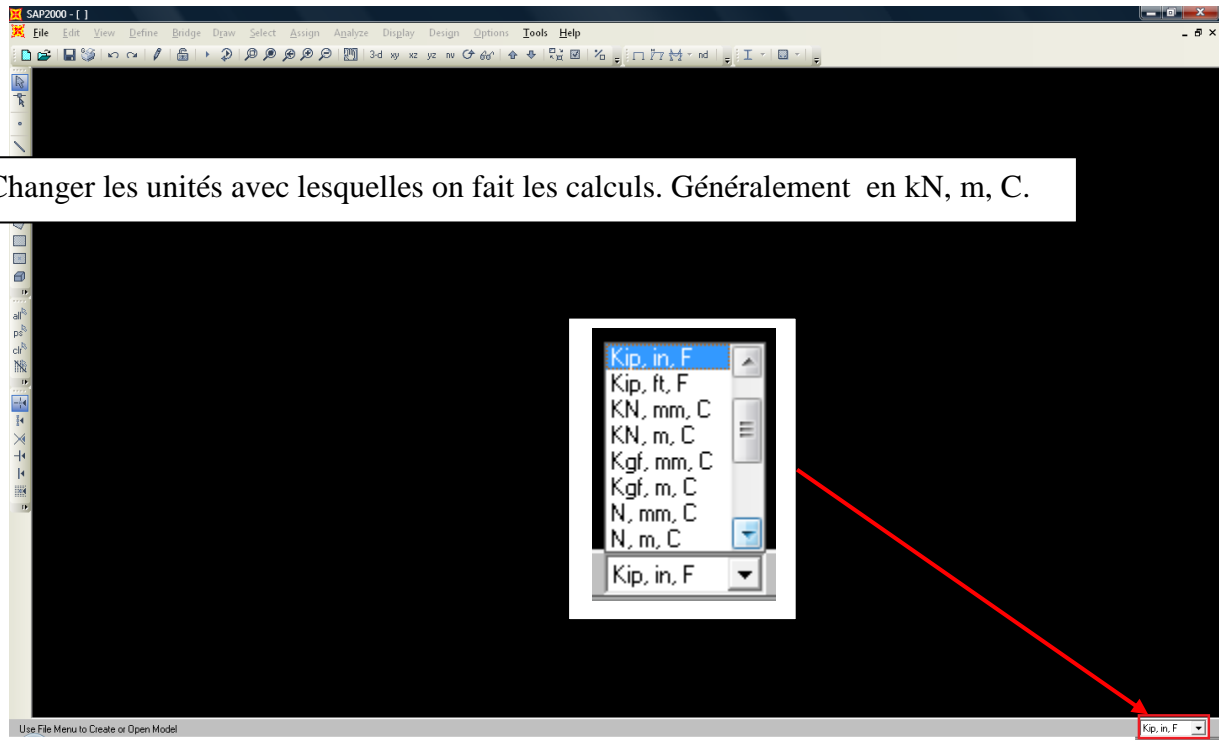
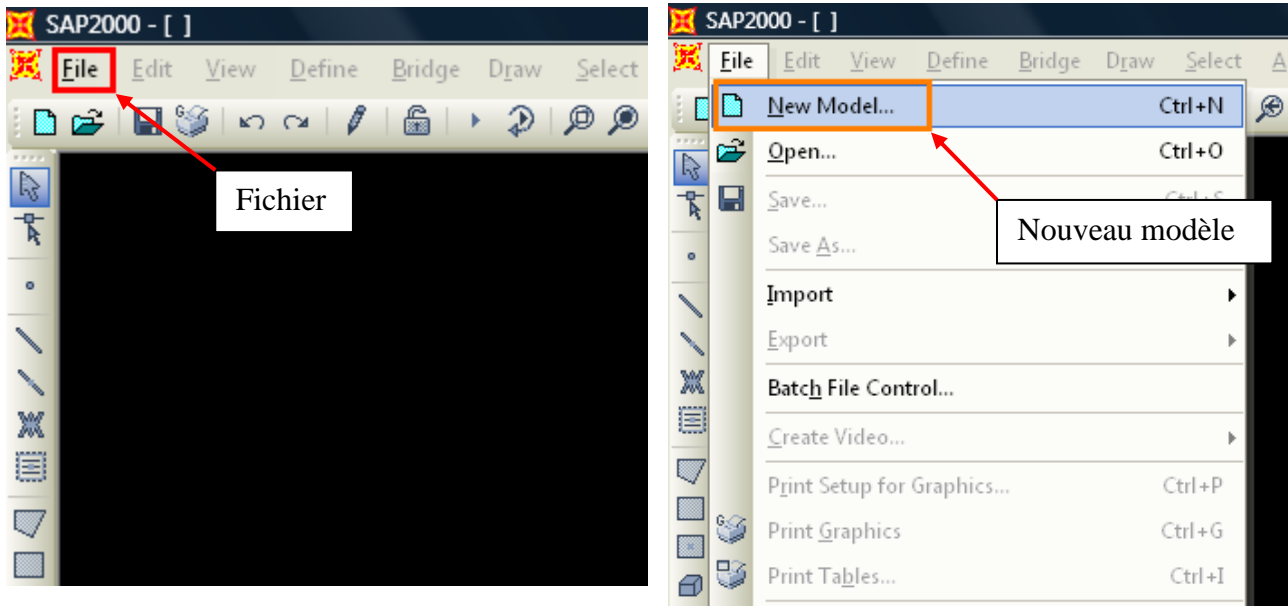
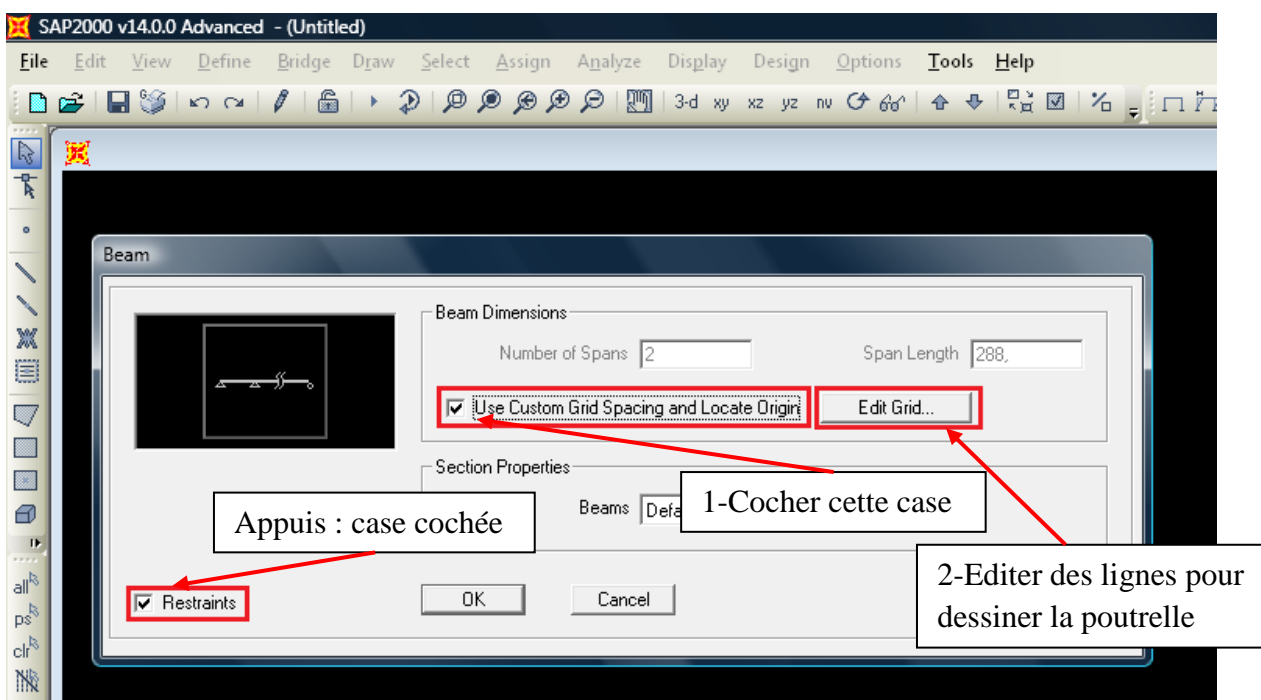
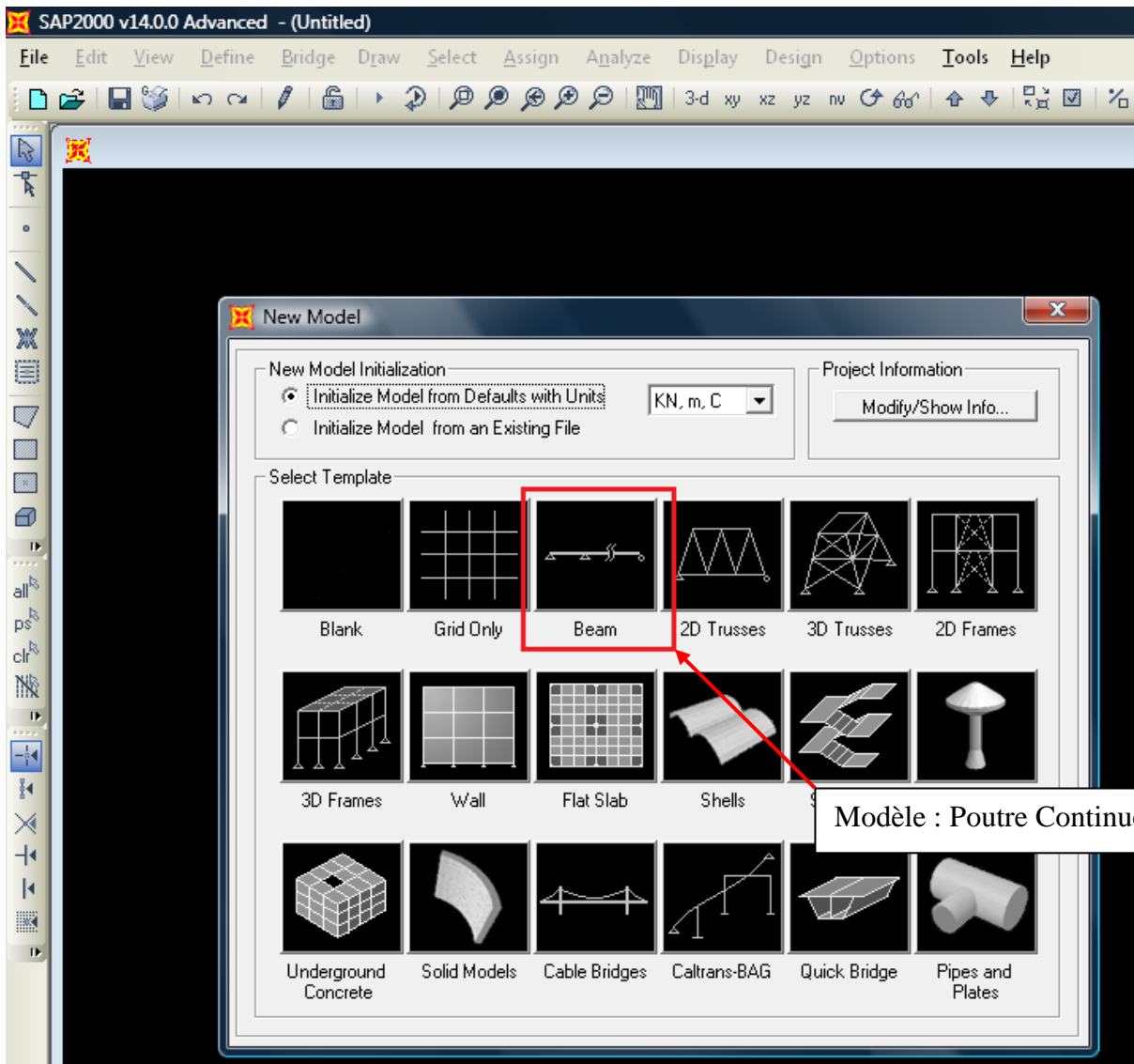


## CHANGEMENT DES UNITES



## DEFINITION DE LA GEOMETRIE DE MODELE AVEC CONDITIONS AUX LIMITES (APPUIS)





SAP2000 v14.0.0 Advanced - (Untitled)

File Edit View Define Bridge Draw Select Assign Analyze Display Design Options Tools Help

Define Grid System Data

Edit Format

System Name: CSYS1 Units: KN, m, C

Grid Lines: Quick Start...

X Grid Data

	Grid ID	Ordinate	Line Type	Visibility	Bubble Loc.	Bubble Loc.
1	A	0	Primary	Show	End	
2	B	4,2	Primary	Show	End	
3	C	8,2	Primary	Show	End	
4	D	12	Primary	Show	End	
5						
6						
7						
8						

Y Grid Data

	Grid ID	Ordinate	Line Type	Visibility	Bubble Loc.	Bubble Loc.
1	1					
2						
3						
4						
5						
6						
7						
8						

Z Grid Data

	Grid ID	Ordinate	Line Type	Visibility	Bubble Loc.	Bubble Loc.
1	Z1	0,	Primary	Show	End	
2						
3						
4						
5						
6						
7						
8						

Display Grids as:  Ordinates  Spacing

Hide All Grid Lines  
 Glue to Grid Lines

Bubble Size: 1,5

Reset to Default Color  
Reorder Ordinates  
Locate System Origin...

OK Cancel

Enfin : Cliquer OK dans cette boîte de dialogue.

Introduire les coordonnées (distance cumulées) des appuis (expl : on a 4 appuis donc 3 travées). Seulement suivant X : modélisation unidimensionnelle.

Ensuite : Cliquer OK

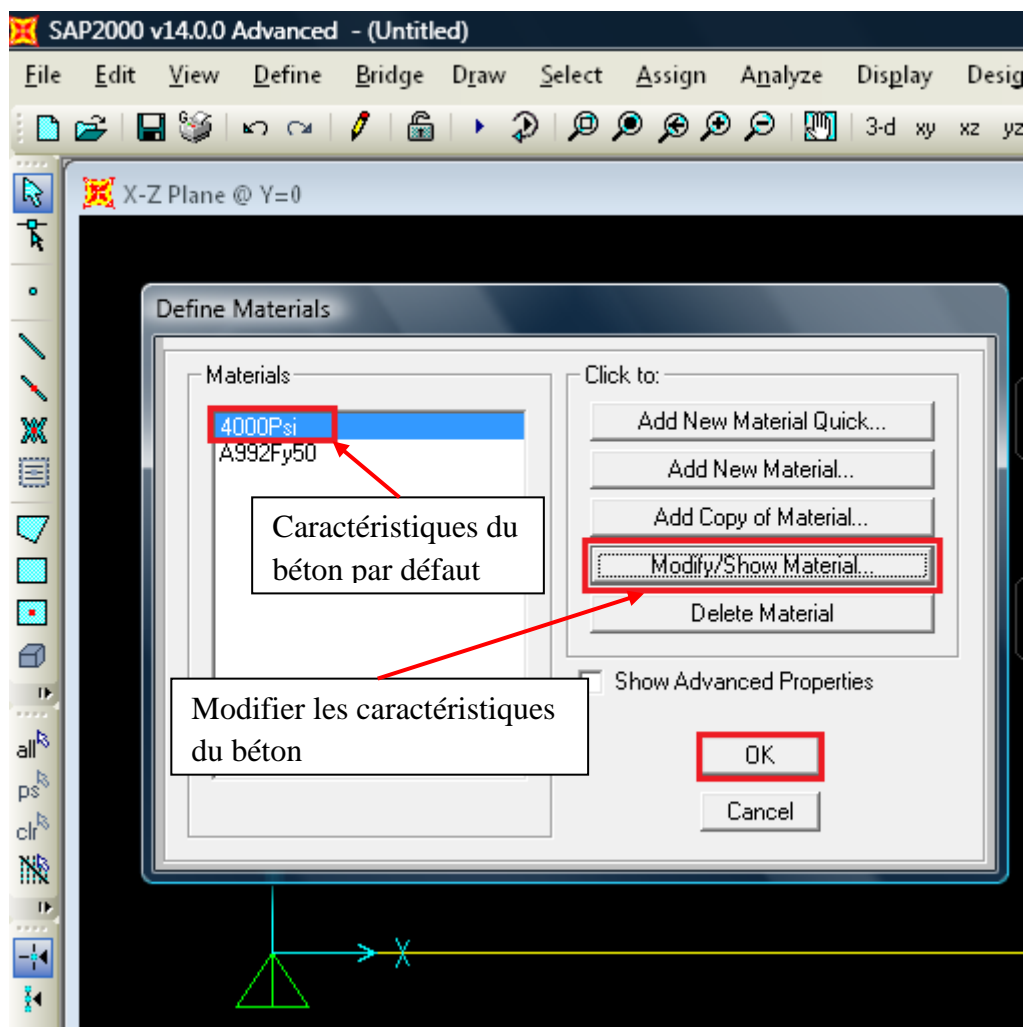
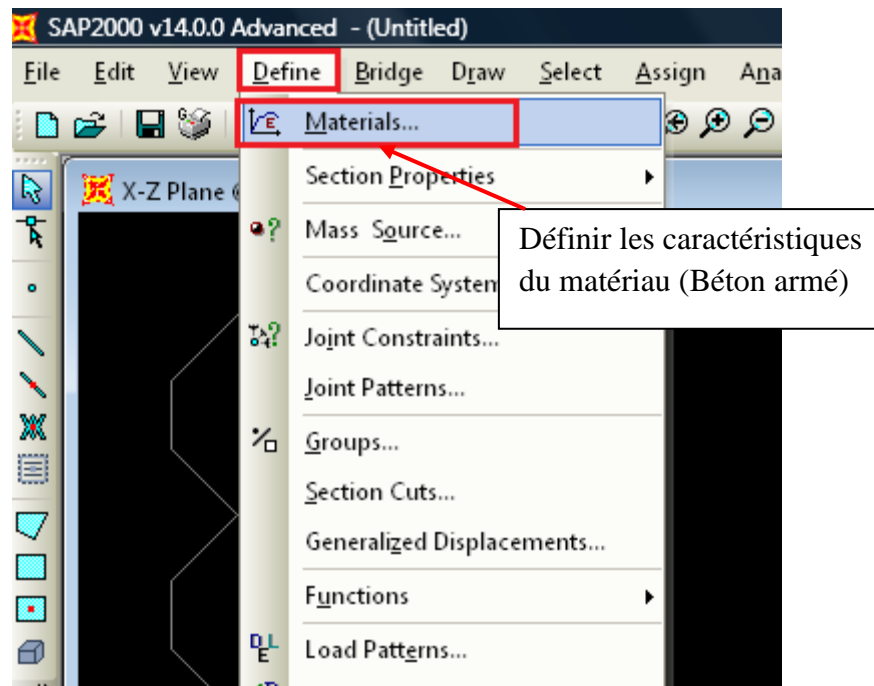
SAP2000 v14.0.0 Advanced - (Untitled)

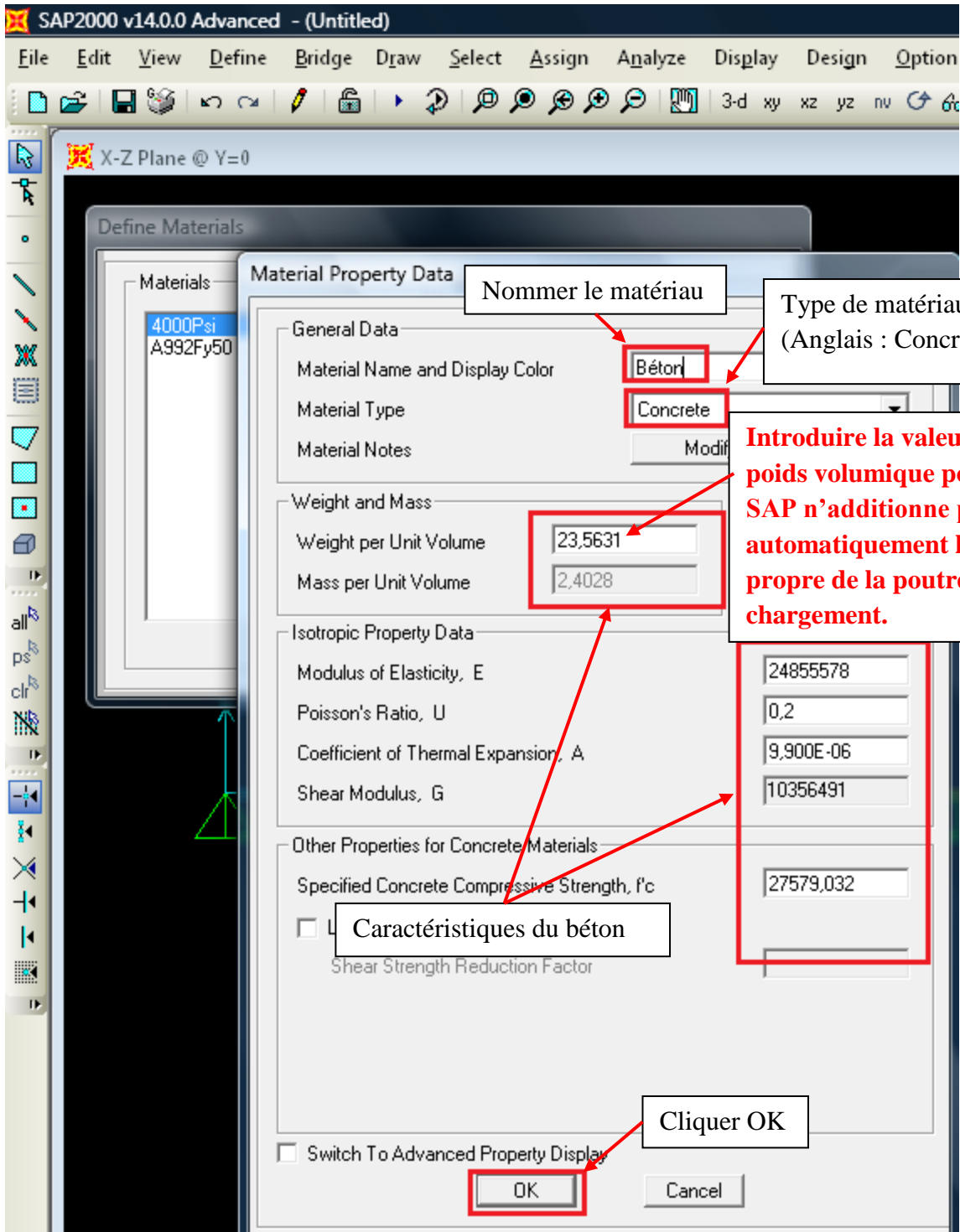
File Edit View Define Bridge Draw Select Assign Analyze Display Design Options Tools Help

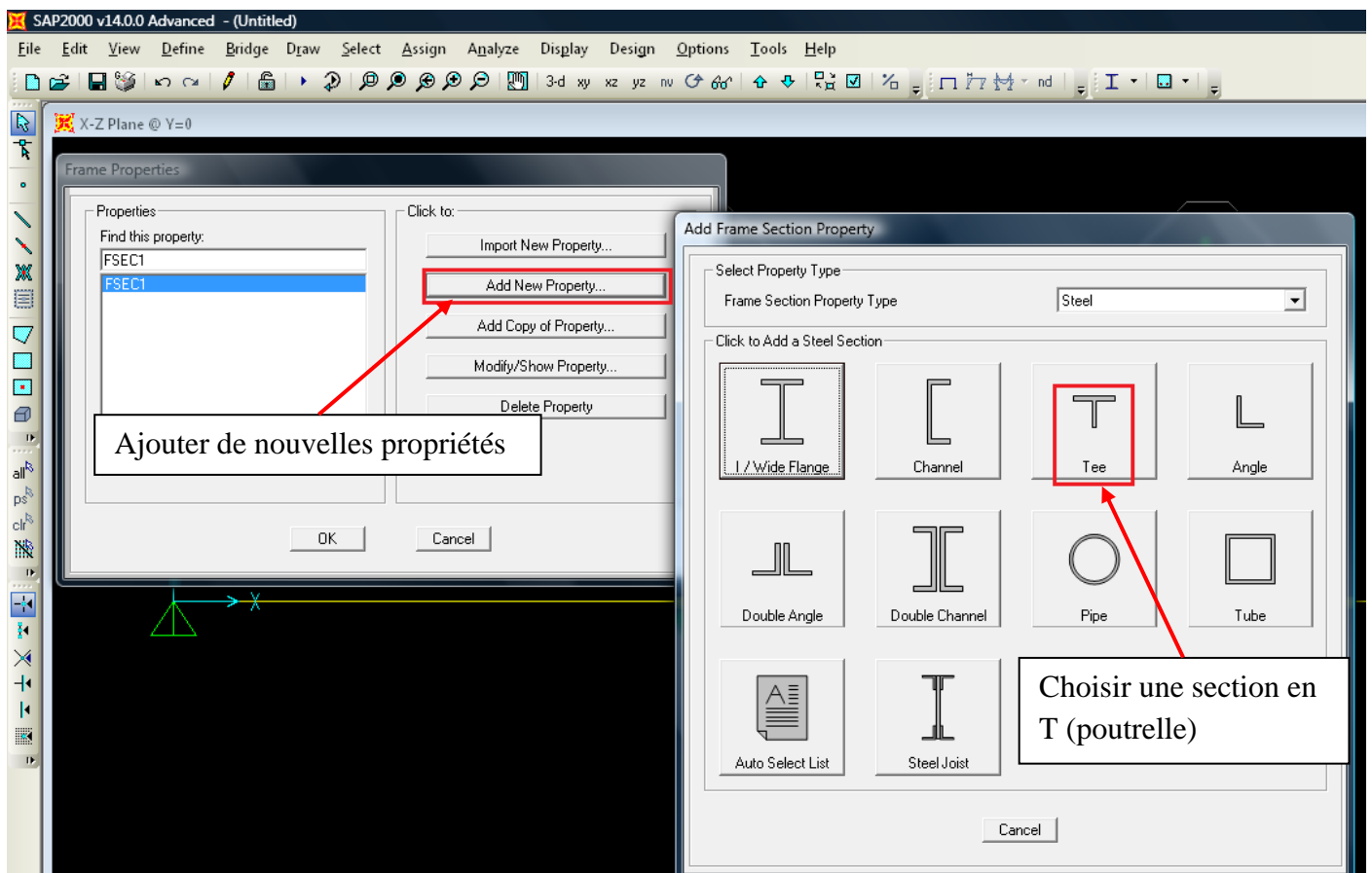
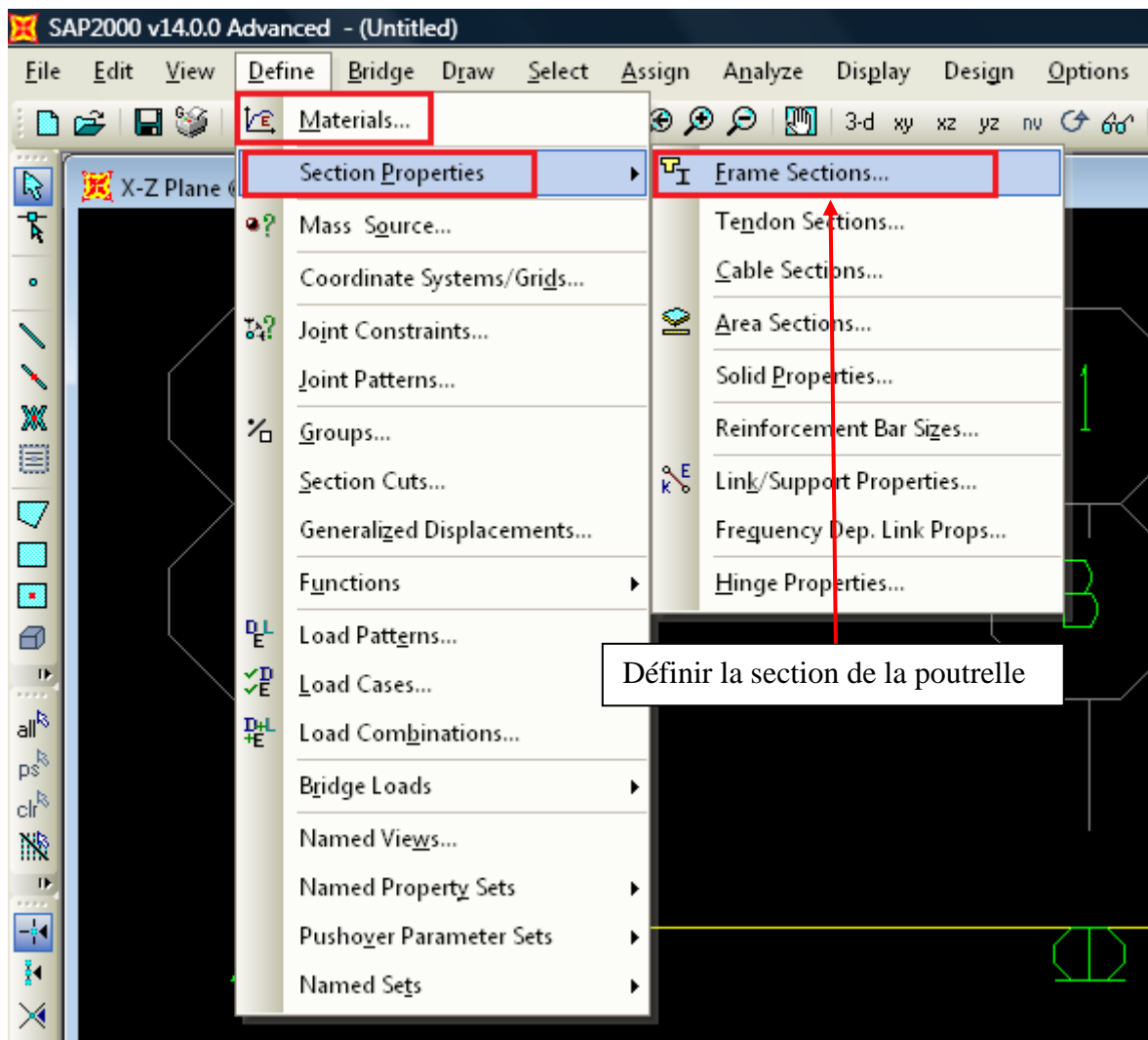
X-Z Plane @ Y=0

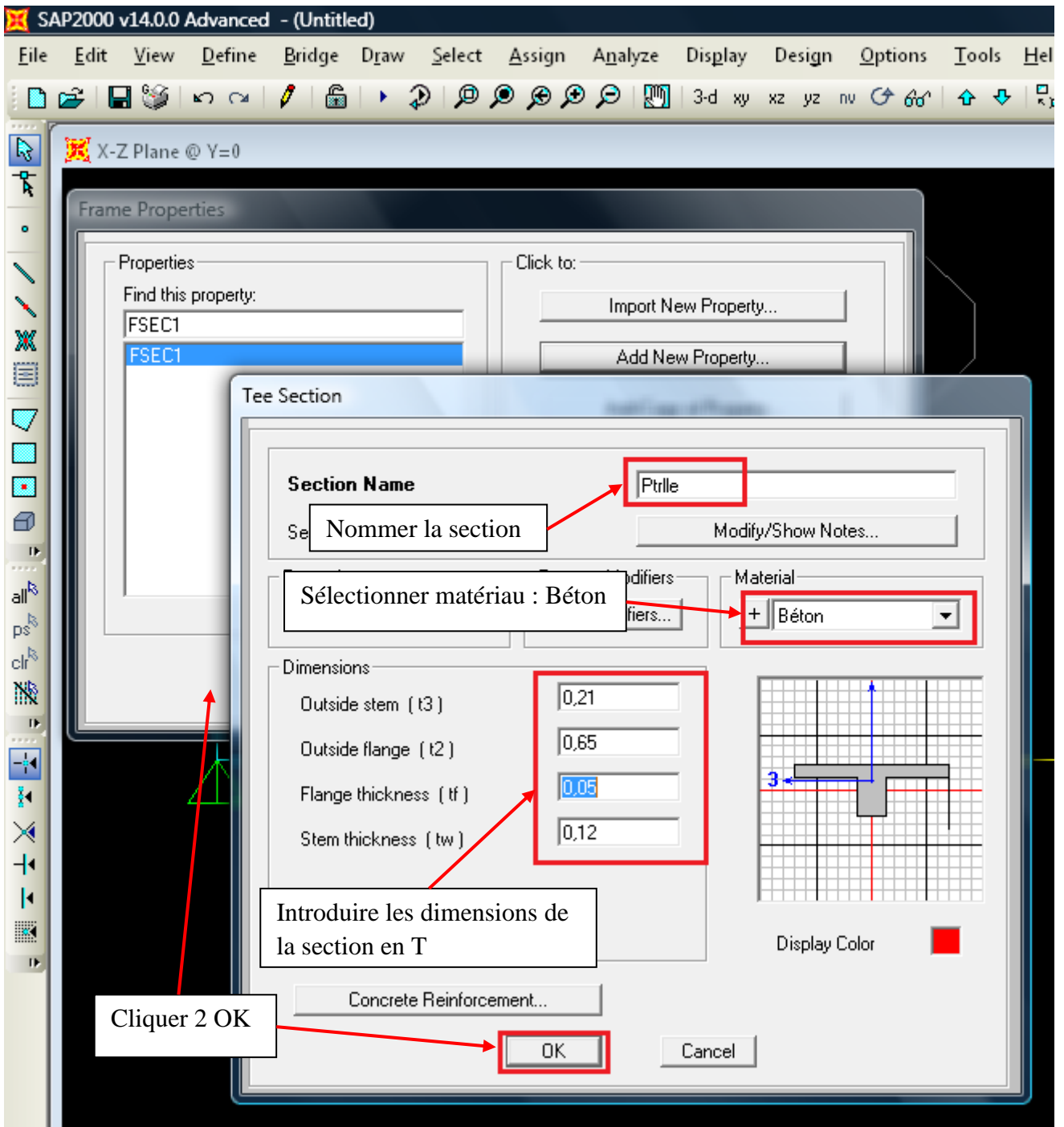
Modèle de la poutelle obtenu

## DEFINITION DES PROPRIETES DES ELEMENTS (MATERIAU ET SECTION)



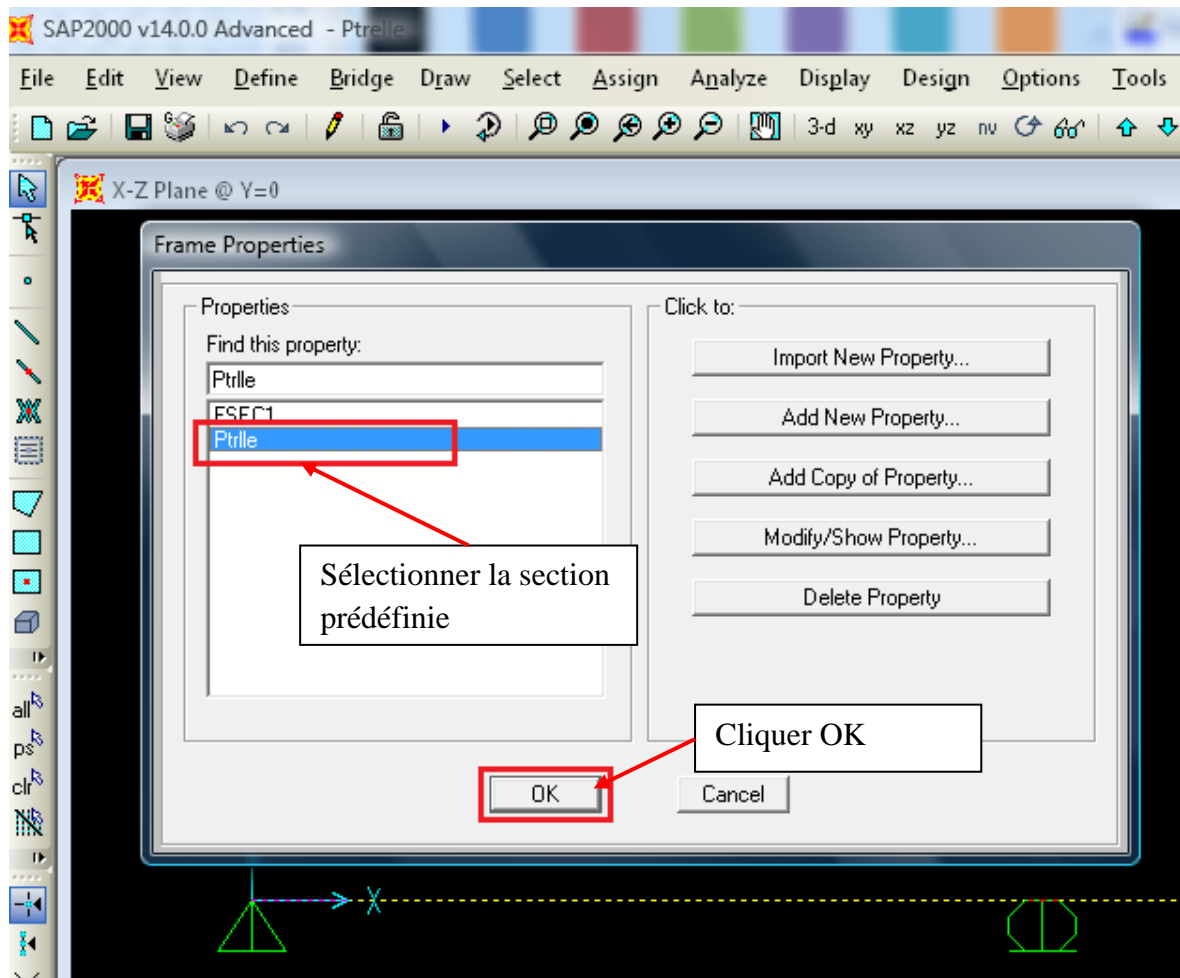




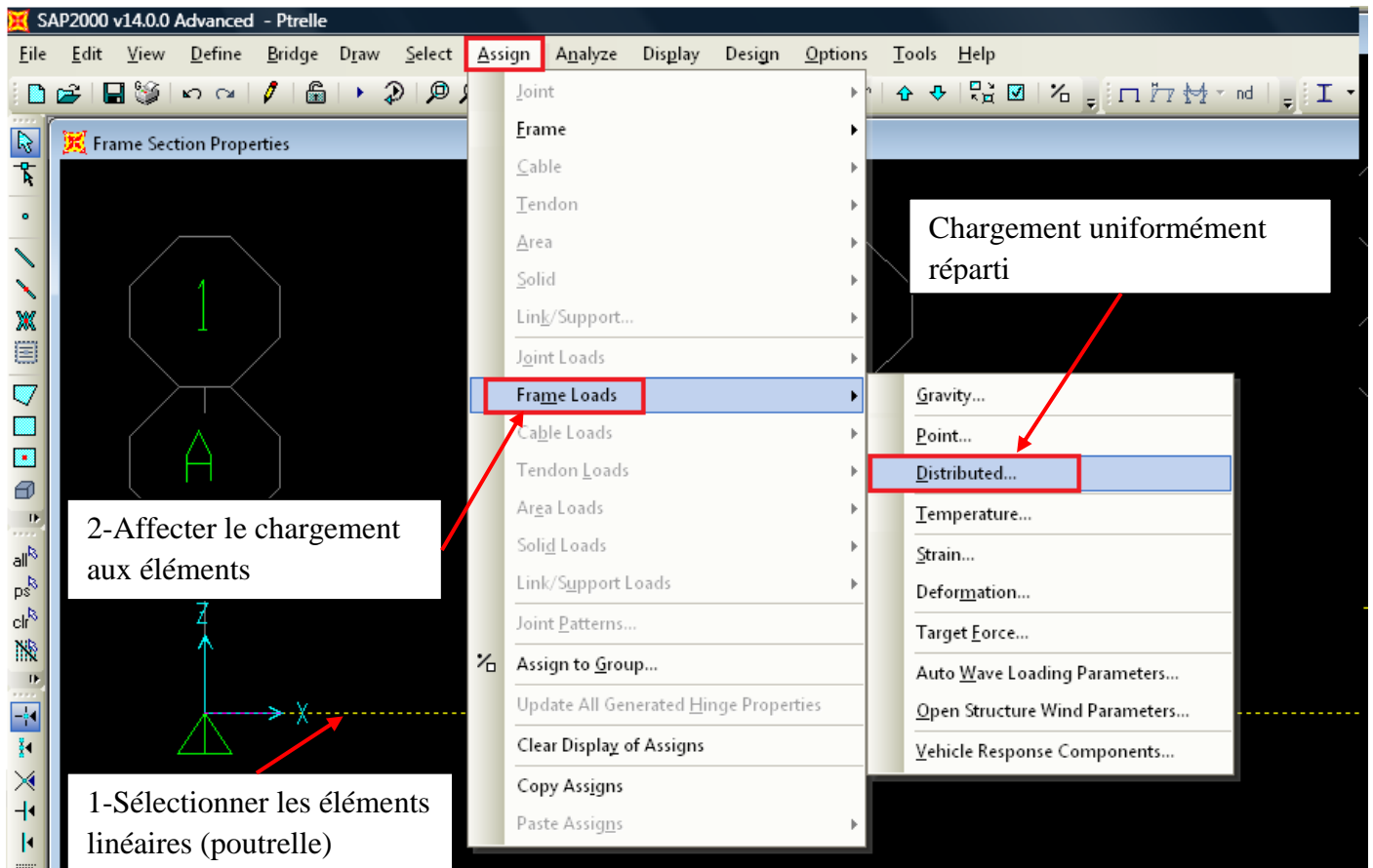


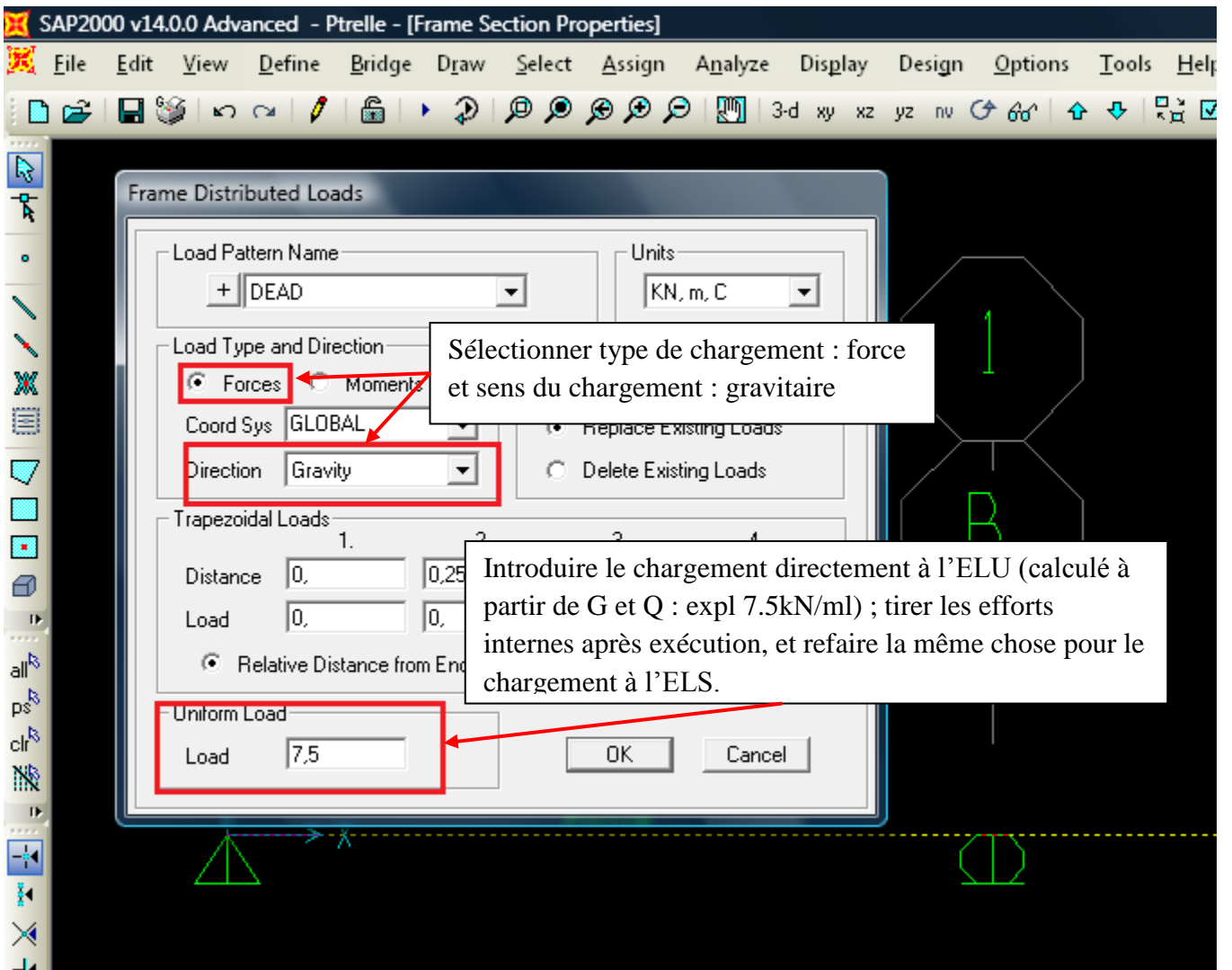




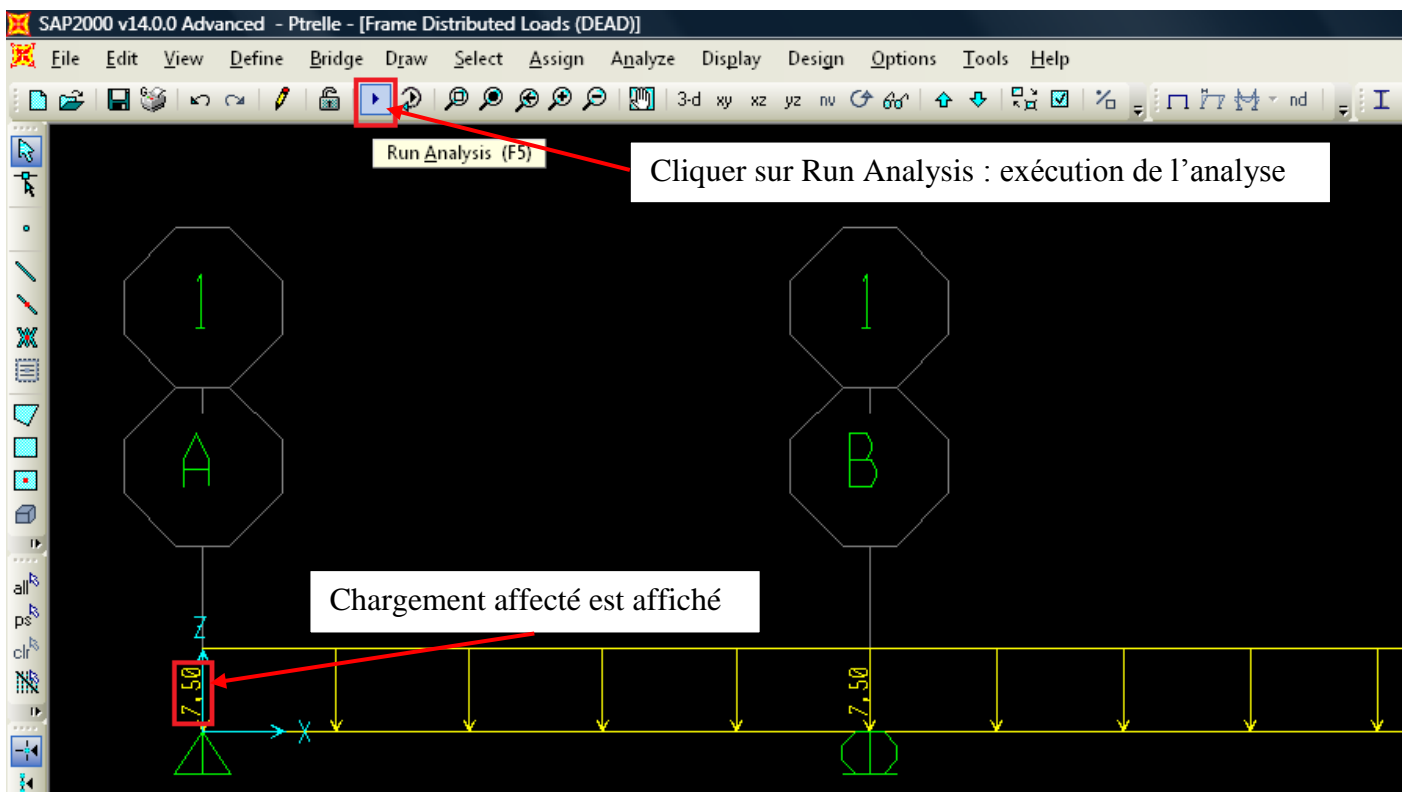


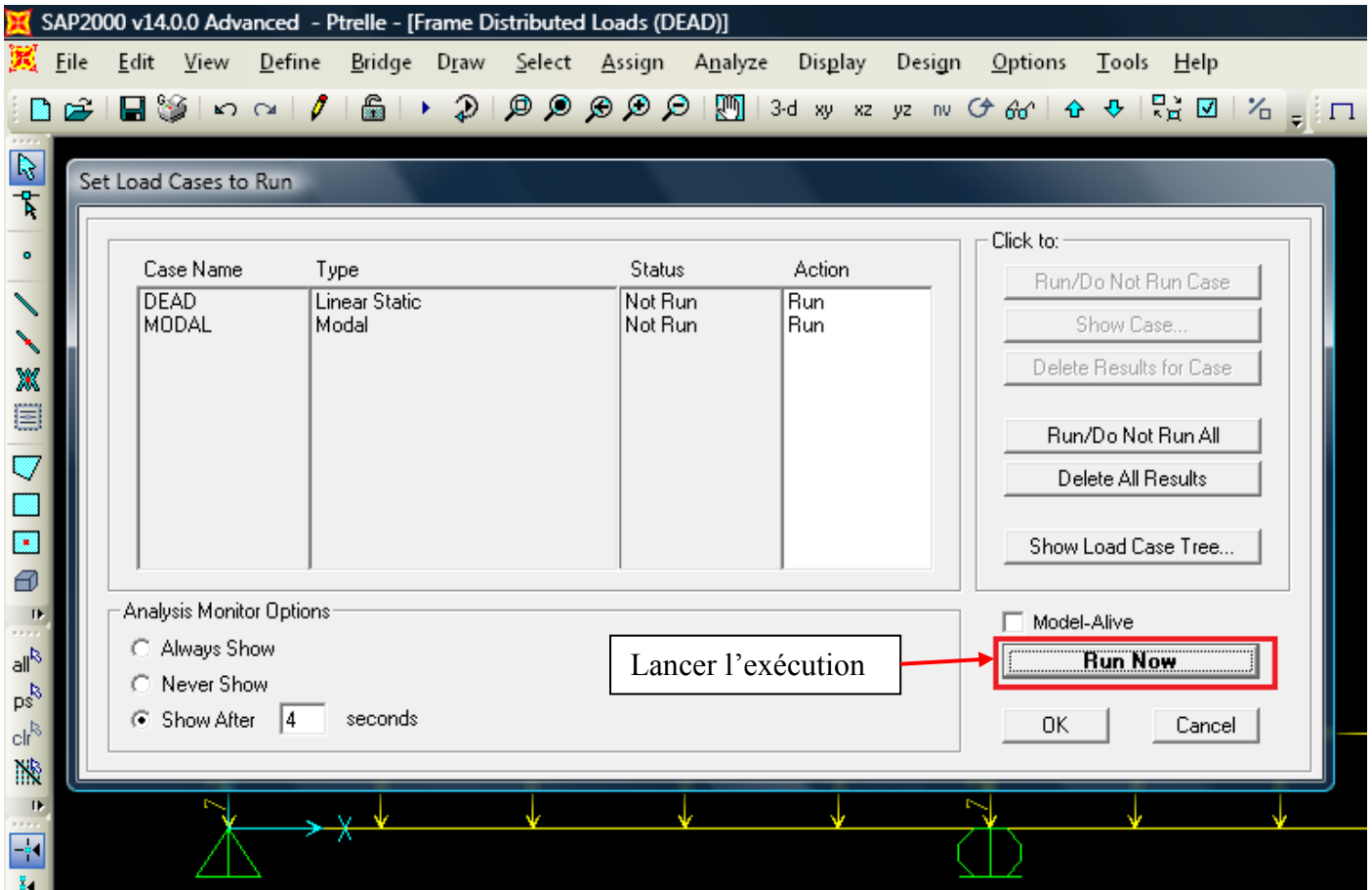
## AFFECTATION DU CHARGEMENT AUX ELEMENTS





## EXECUTION DES CALCULS PAR SAP2000





## VISUALISATION DES RESULTATS (EFFORTS INTERNES)

