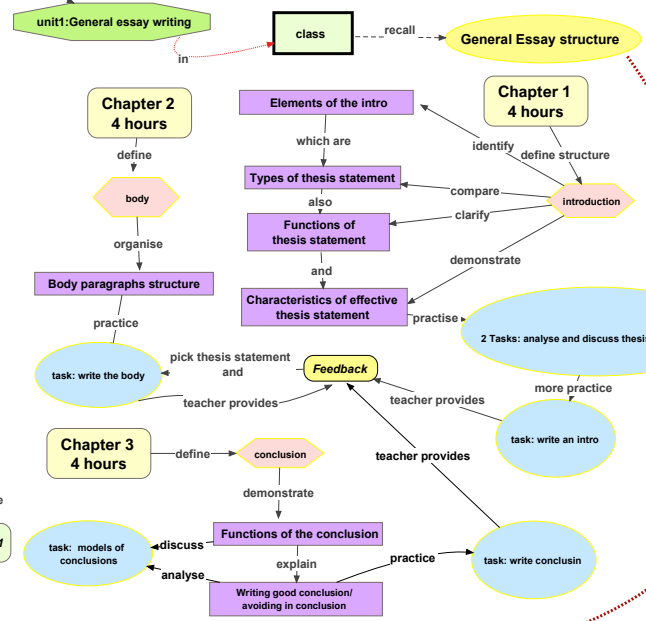
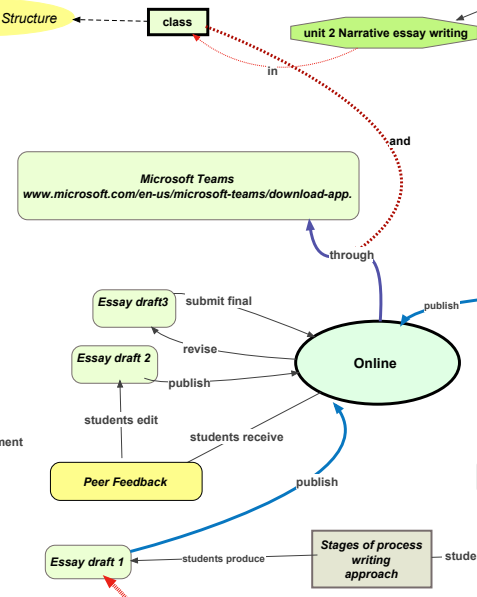
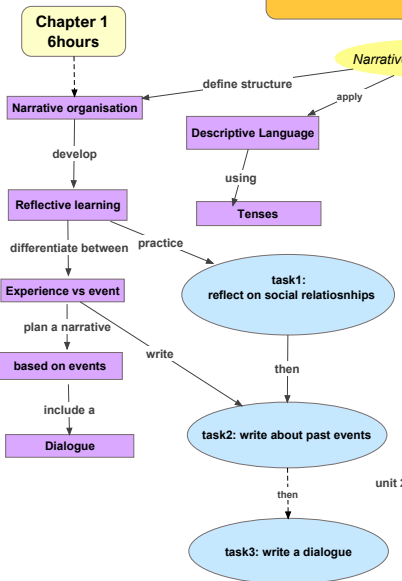


unit 2 aims to develop students ability to reflect and evaluate their own experiences.

Teaching L2 Writing module: CWE 2 hours per week

unit 1 aims to introduce students to general essay, and to develop their ability to construct views and write about different topics.



write an essay on the topic of your interest

write an essay on the topic of your interest

References

Pedagogic manual: published by university of Tlemcen, Teachers of English. 2018-2019

My PhD thesis published in the library of Northampton University: <https://pure.northampton.ac.uk/en/studentTheses/developing-a-learning-identity-a-narrative-study-of-algerian-women>. 2020.

Zekri Wafa, Dr in Applied Linguistics
Tlemcen University
2021-2020