

✚ To describe (a monument):

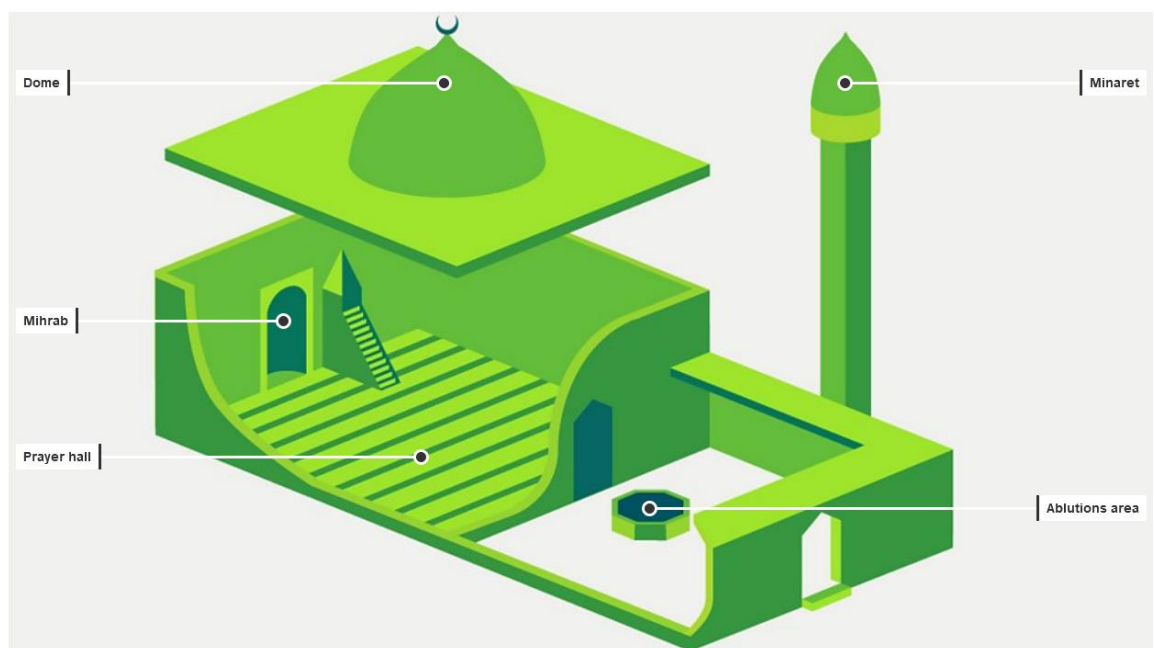
✓ Mosque

Mosque, Arabic **masjid** or **jāmi'**, is a place of worship in Islam.. The Arabic word *masjid* means “a place of prostration” to God.



The great mosque of Tlemcen

Islamic Architecture :Parts of a mosque (external)



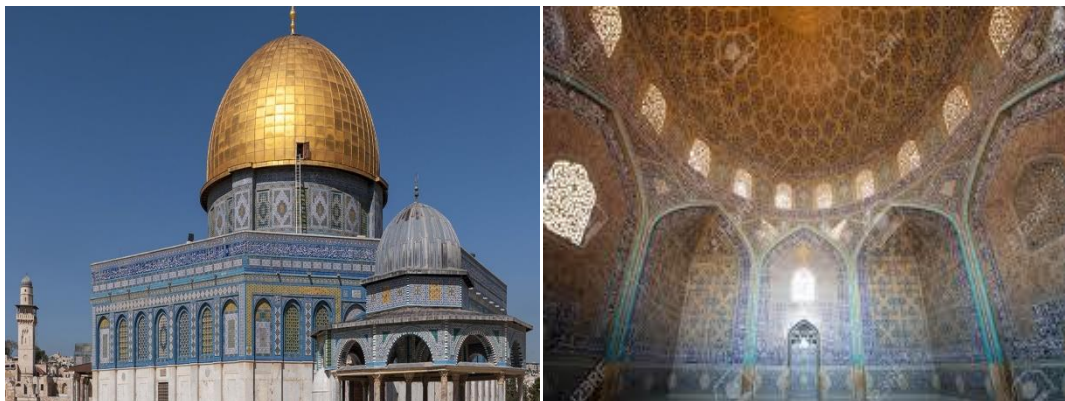
Minaret



A minaret is a slim tower with balconies or open galleries from which a mosque's muezzin calls the faithful to prayer five times each day. Minarets are distinctive traditional features of many mosques, though they vary in height, style, and number. Minarets may be square, round, hexagonal, octagonal, or even spiral and they are usually covered with a pointed roof.

The word minaret derives from the Arabic word for "lighthouse" or "beacon."

Dome

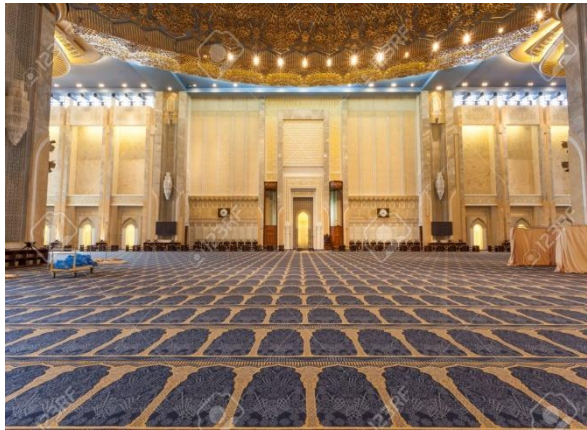


ISFAHAN, IRAN – the mosque Sheikh Lotfollah

Many mosques are decorated with a dome rooftop. The interior of a dome is usually highly decorated with floral, geometric and other patterns.

The main dome of a mosque usually covers the main prayer hall of the structure. Some mosques may have secondary domes, as well.

Prayer Hall



Main prayer hall from the great mosque in Kuwait City

Inside, the central area for prayer is called a *musalla* (literally, "place for prayer"). the prayer hall is otherwise a large, open space.

Mihrab



The main mihrab, Umayyad Mosque, Damascus

The *mihrab* is an ornamental, semi-circular indentation in the wall of the prayer room of a mosque that marks the direction of the *qibla* —the direction facing Mecca which Muslims face during prayer. Mihrabs vary in size and color

Minbar



Minbar de la [Grande Mosquée de Kairouan](#)

The *minbar* is a raised platform in the front area of a mosque prayer hall, from which sermons or speeches are given. The minbar is usually made of carved wood, stone, or brick. It includes a short staircase leading to the top platform, which is sometimes covered by a small dome.

Ablution Area



Ablution area, Sultan Qaboos Grand Mosque, Muscat, Oman. Richard Sharrocks / Getty Images

Ablutions (ritual washing) are part of the preparation for Muslim prayer. Sometimes a space for ablutions is set aside in a restroom or washroom. Alternatively, there may be a fountain-like structure along a wall or in a courtyard. Running water is available, often with small stools or seats to make it easier to sit down to wash the feet.