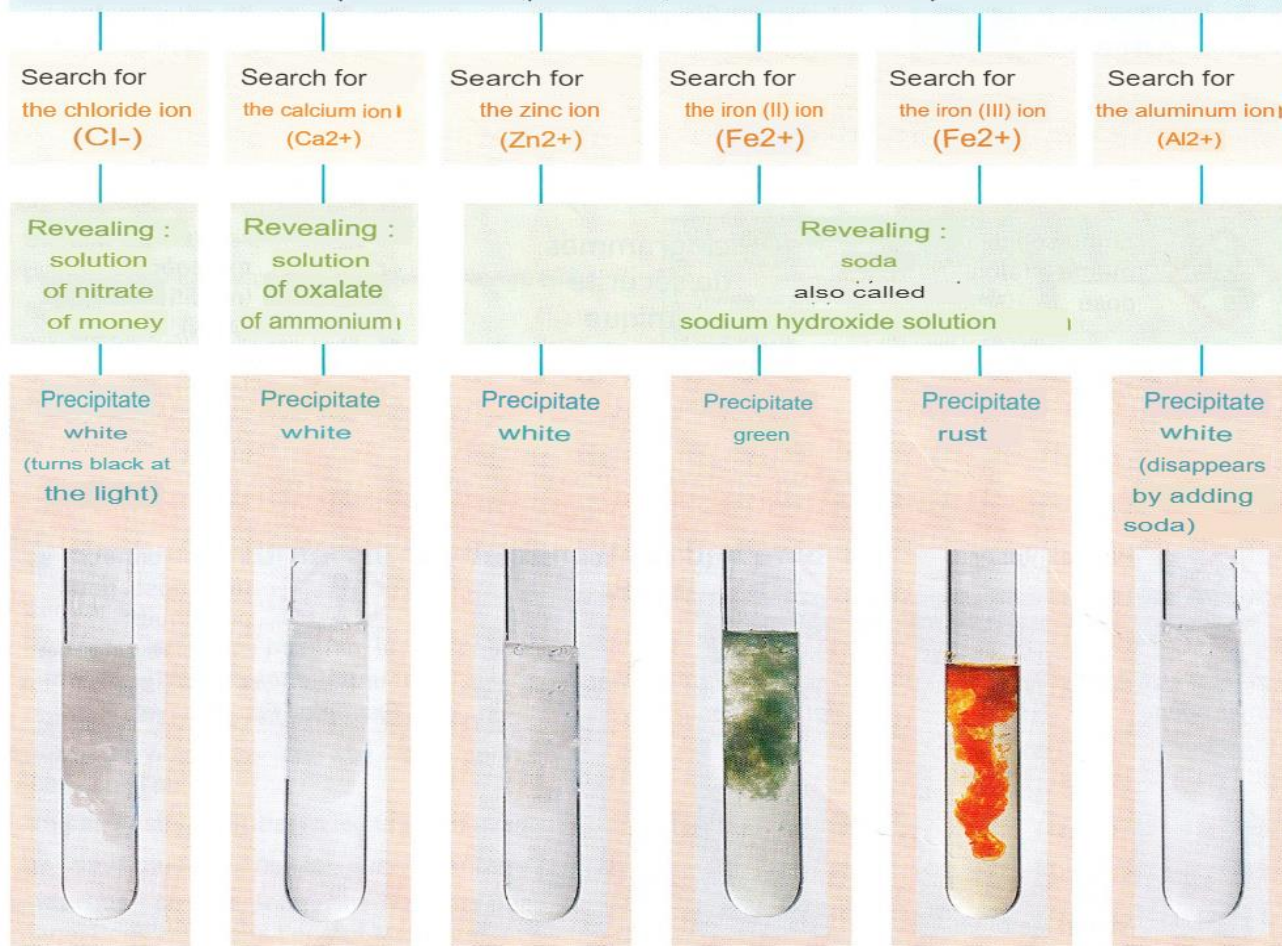


## 1 Tests for the presence of some ions

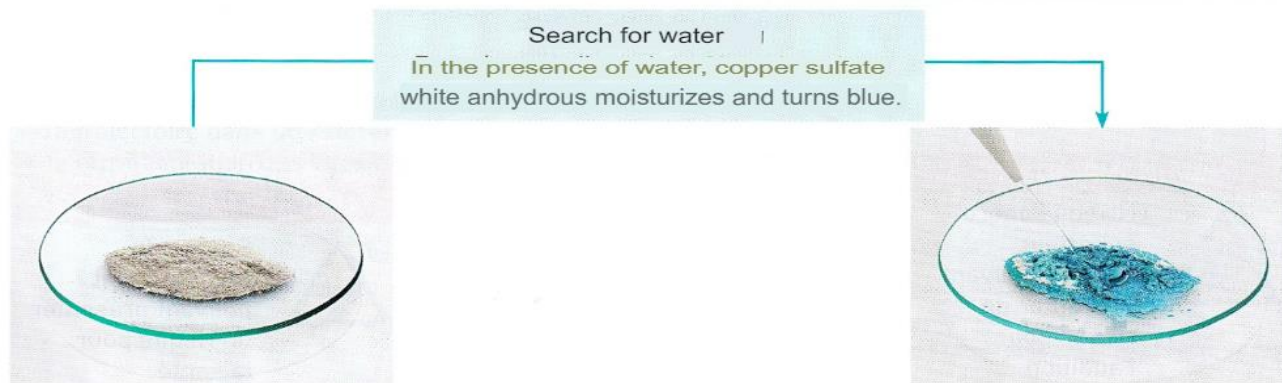
Protocol :

- Pour a sample of the test solution into a test tube.
- Add a few drops of the "developer" of the desired ions.
- If the observation corresponds to the expected one, the desired ions are present in the solution.

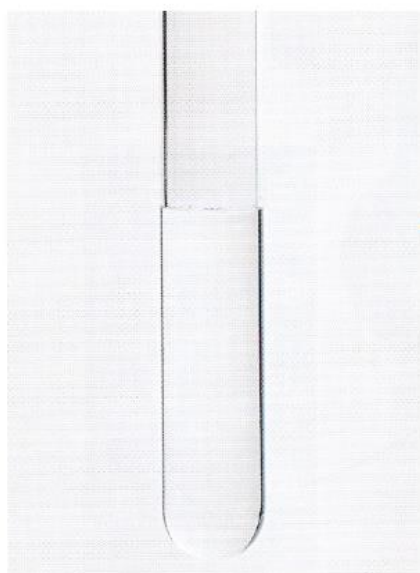


Precipitate: Solid insoluble in solution

## 2 Water presence test

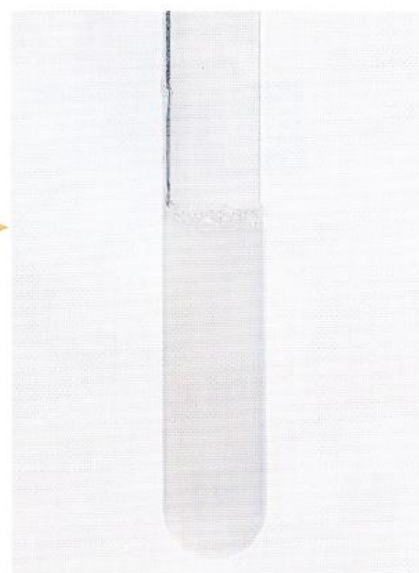


### 3 Tests for the presence of some gases

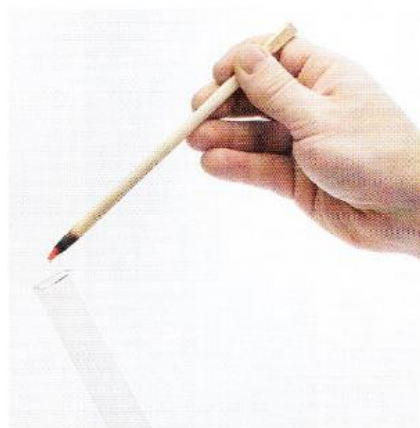


Lime water

Search for dioxide  
of carbon ( $\text{CO}_2$ )  
The formation of a precipitate  
white in lime water  
is a proof of the  
presence of dioxide  
of carbon.

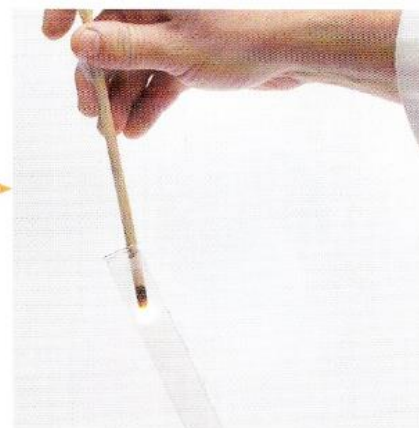


Troubled lime water

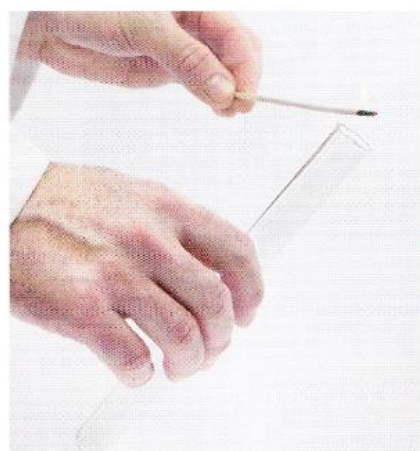


Incandescent candle

Search for oxygen ( $\text{O}_2$ )  
The flame that appears on  
an incandescent log  
is a proof of the  
presence of oxygen dioxide.

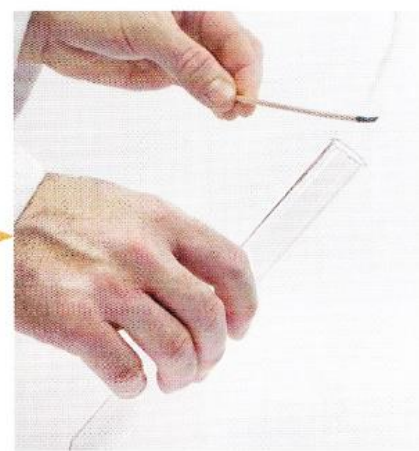


Flaming bûchette



Flaming bûchette presented  
in front of the test tube

Search for dihydrogen  
( $\text{H}_2$ )  
The detonation that occurs  
when we approach a  
flaming bûchette is a  
proof of the presence of  
dihydrogen.  
If the detonation is enough  
important, it can  
turn off the flame.



Detonation that can turn off  
the flame