



## GI541: Introduction to Information Systems

Dr. H. BETAOUAF

### Lab Session 1

Weeks 3 & 4: October 05 –16

#### Objective of the Lab:

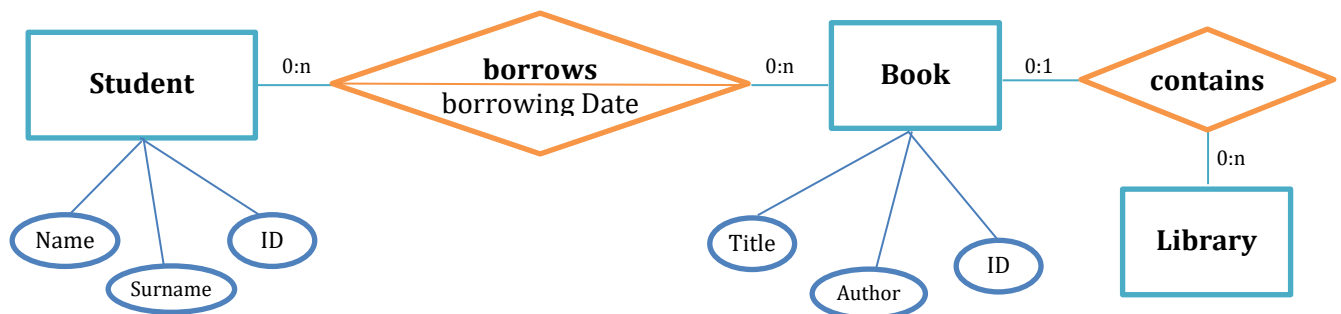
As a first lab session, you will need to get familiar with the interfaces of the DBMS MS-ACCESS or BASE (Open Office), master the creation of databases, the creation of tables, and the insertion of data.

The objective is to discover the concepts of the Entity-Relationship (ER) model (Entity, Relationship, Attributes...).

#### Project 1

##### Entity-Relationship Model for a Library

- A library can contain several books.
- A book has an author, a publication date, and an identification number.
- A student has an identification number, a first name, and a last name.
- A student can borrow several books and cannot keep a book for more than three months.





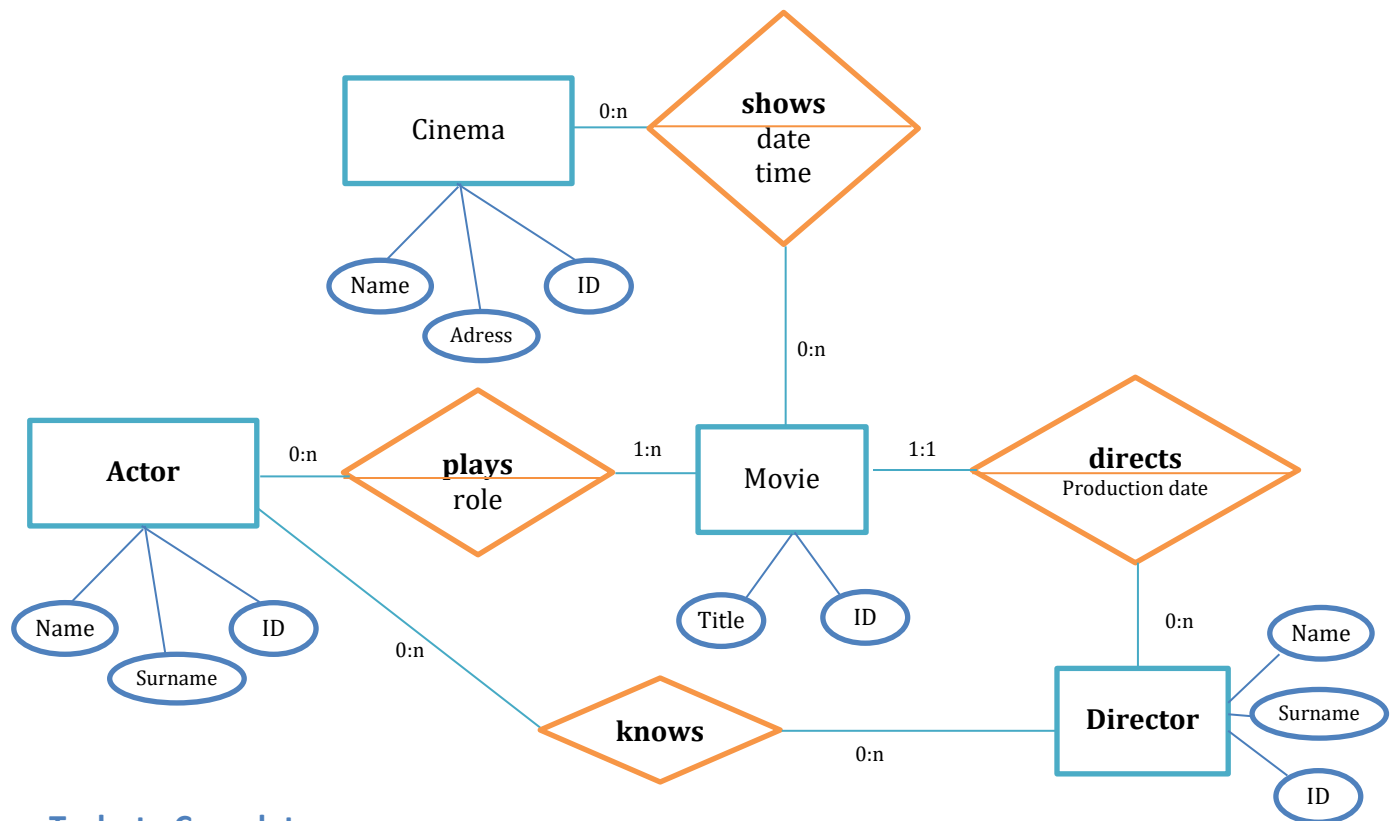
## GI541: Introduction to Information Systems

Dr. H. BETAOUAF

### Project 2

#### Entity-Relationship Model for a Cinema

- A cinema has an identification number, a name, and an address, and shows several movies at specific dates and times.
- A movie has a title, actors who play specific roles in it, a director, and a production date.
- The actors and directors may know each other and all have an identifier and a name.



#### Tasks to Complete:

In this lab work, you are required to:

- Create two databases named: **Project1\_Library** and **Project2\_Cinema**.
- Create a table for each entity in each project.
- Create the fields of each table corresponding to the attributes of the entities.
- Populate the tables with at least 5 records each.
- Submit the two database files at the end of the session.