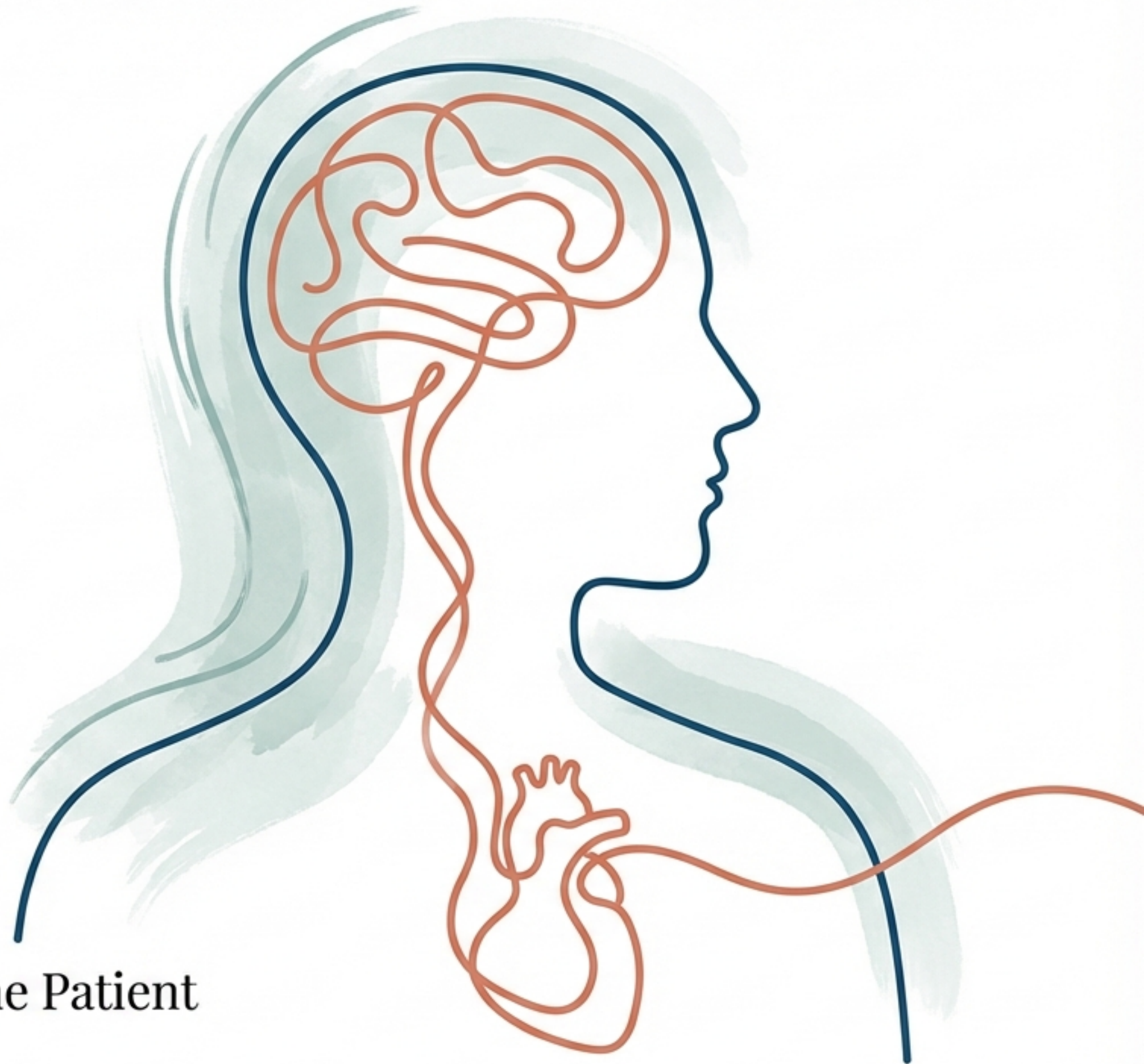


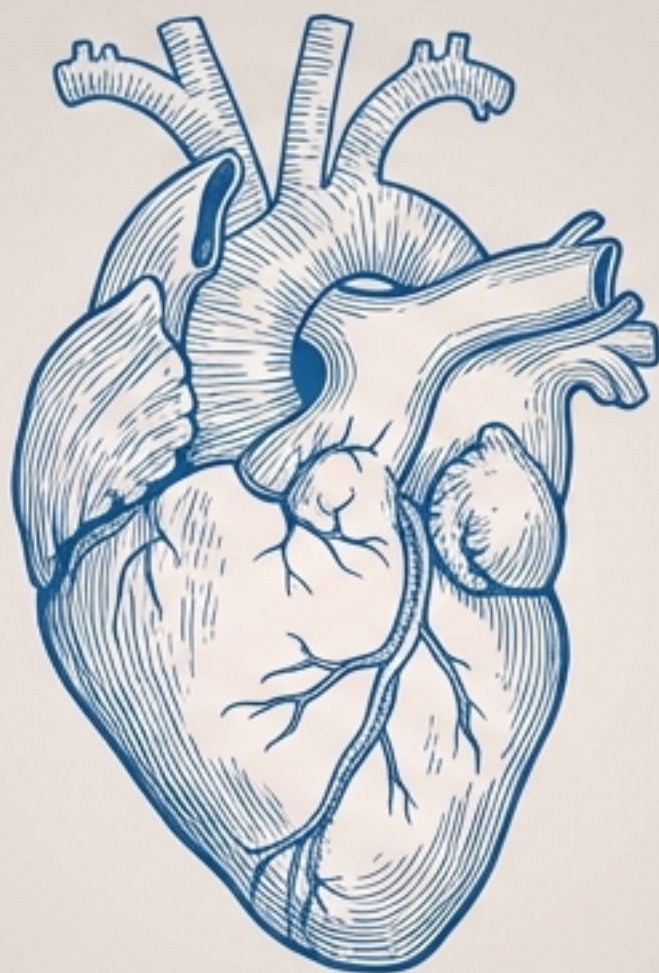
Module: Medical Psychology (L1/S2)

The Mind-Body Architecture

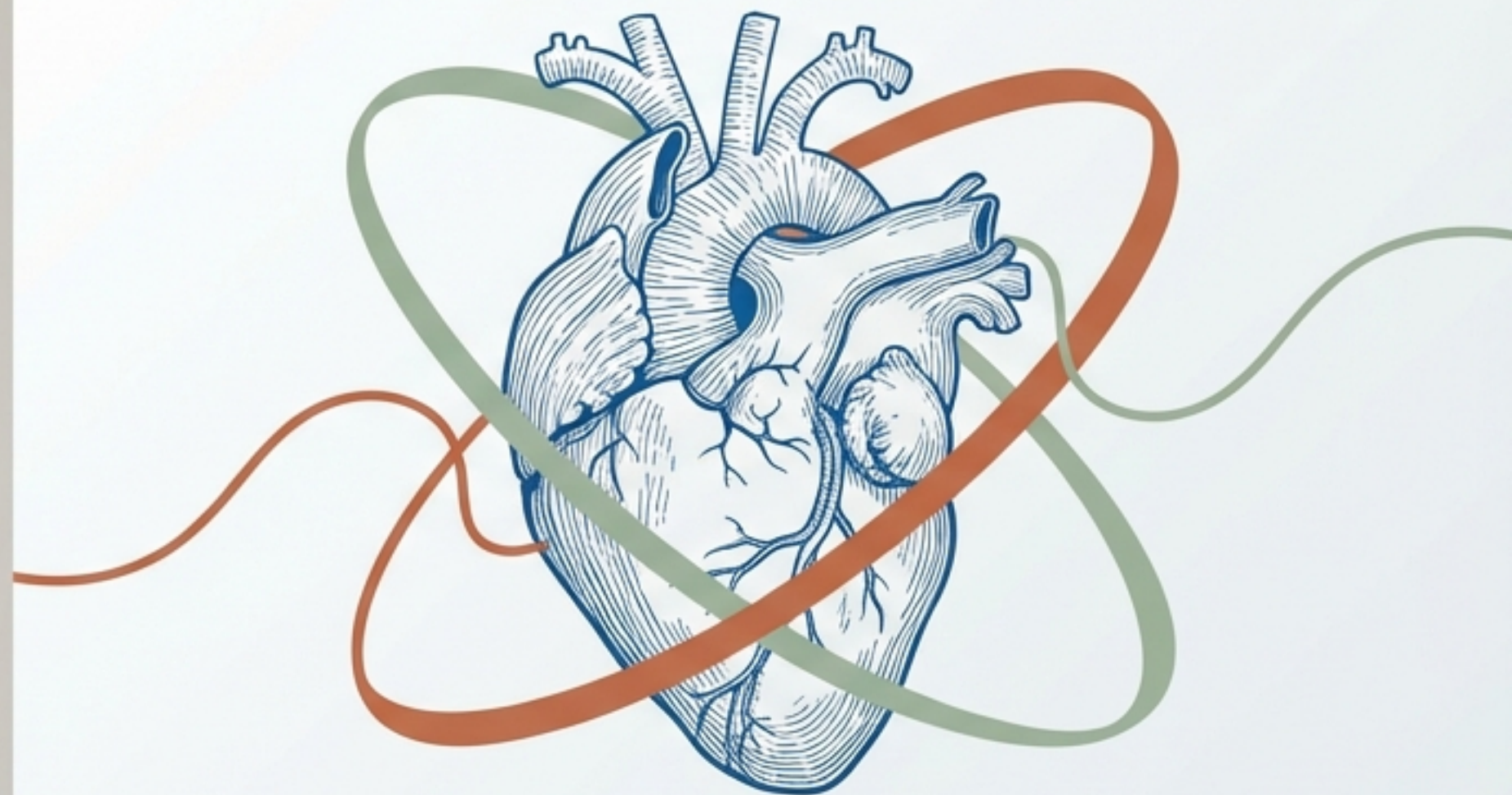
Moving Beyond the Disease to Heal the Patient



Doctors treat patients, not just isolated diseases



Traditional Focus: The Disease



Medical Psychology: The Patient

Medical psychology explores how mental states, emotions, and behaviors directly influence physical health and illness. The goal is not merely to understand the pathology, but to master how the human mind alters the human body.

The Anatomy of a Clinical Experience

Psychology

The scientific study of the mind and behavior.

(e.g., A patient anticipates a surgical outcome)

Emotion

Feelings such as fear, happiness, or sadness.

(e.g., The patient feels intense fear before the procedure)

Stress

A physical and mental response to pressure or challenges.

(e.g., The fear triggers a faster heartbeat and rising blood pressure)

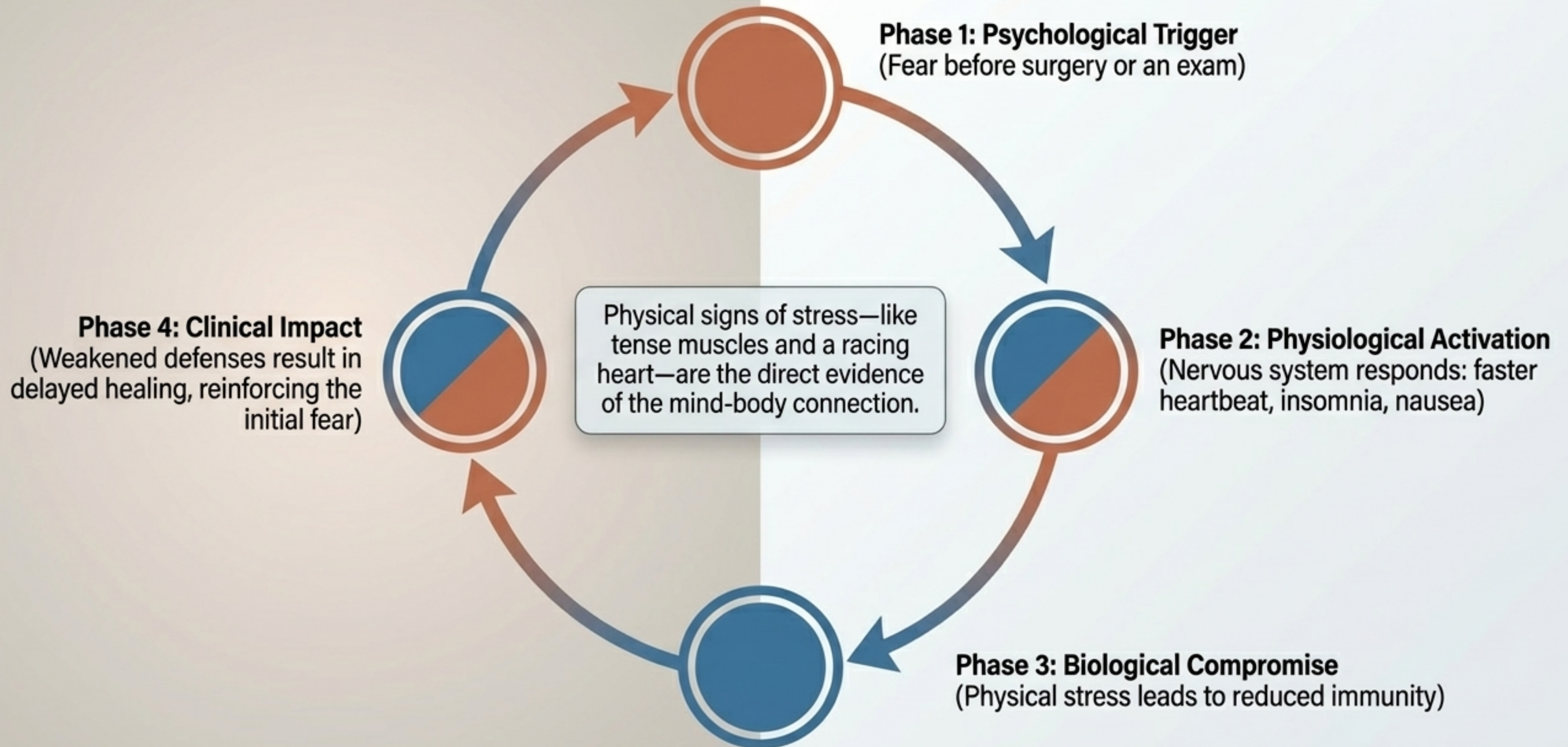
Behavior

How a person acts or responds.

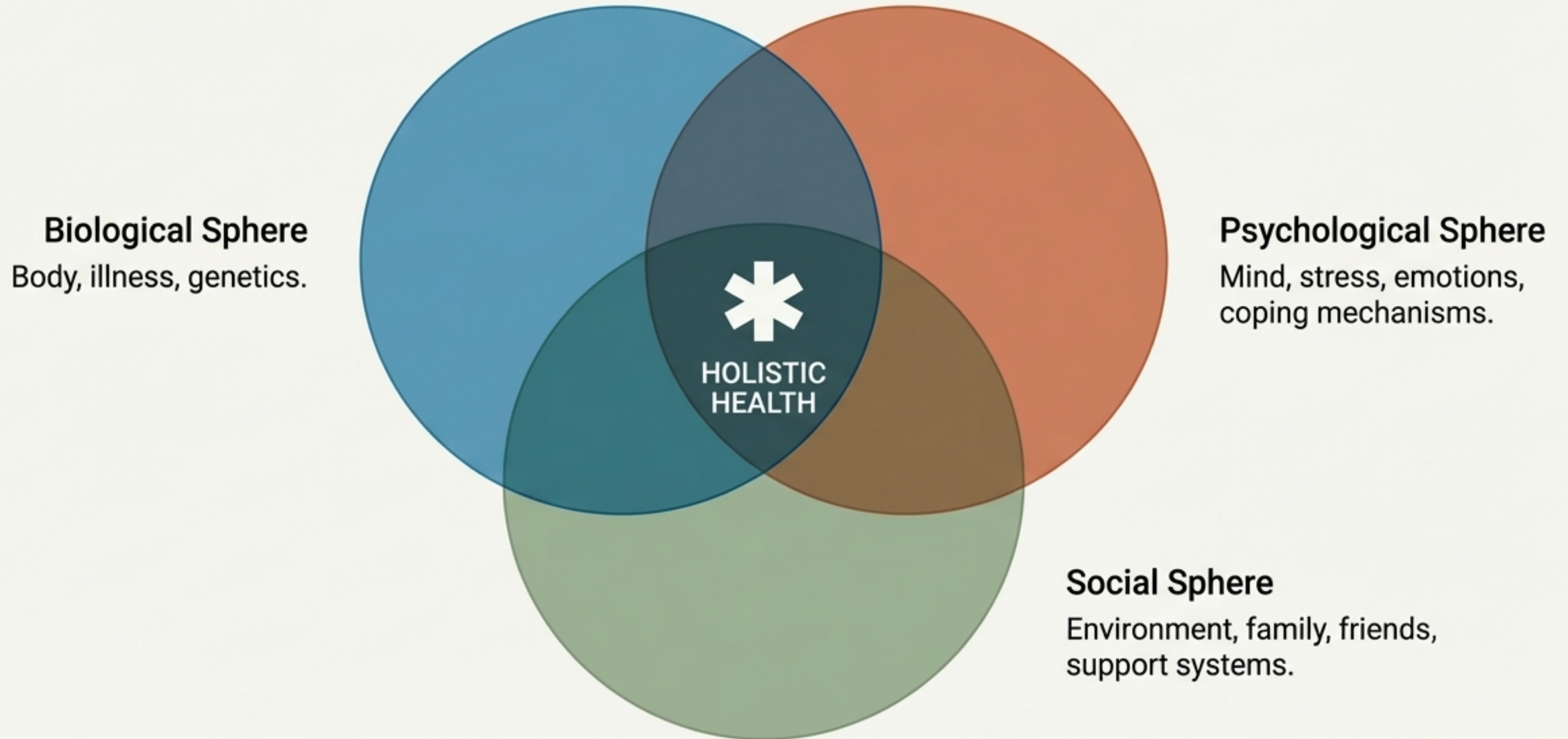
(e.g., The patient's daily actions are altered by these feelings)

Takeaway: Medical Psychology is the application of these concepts to health and disease.

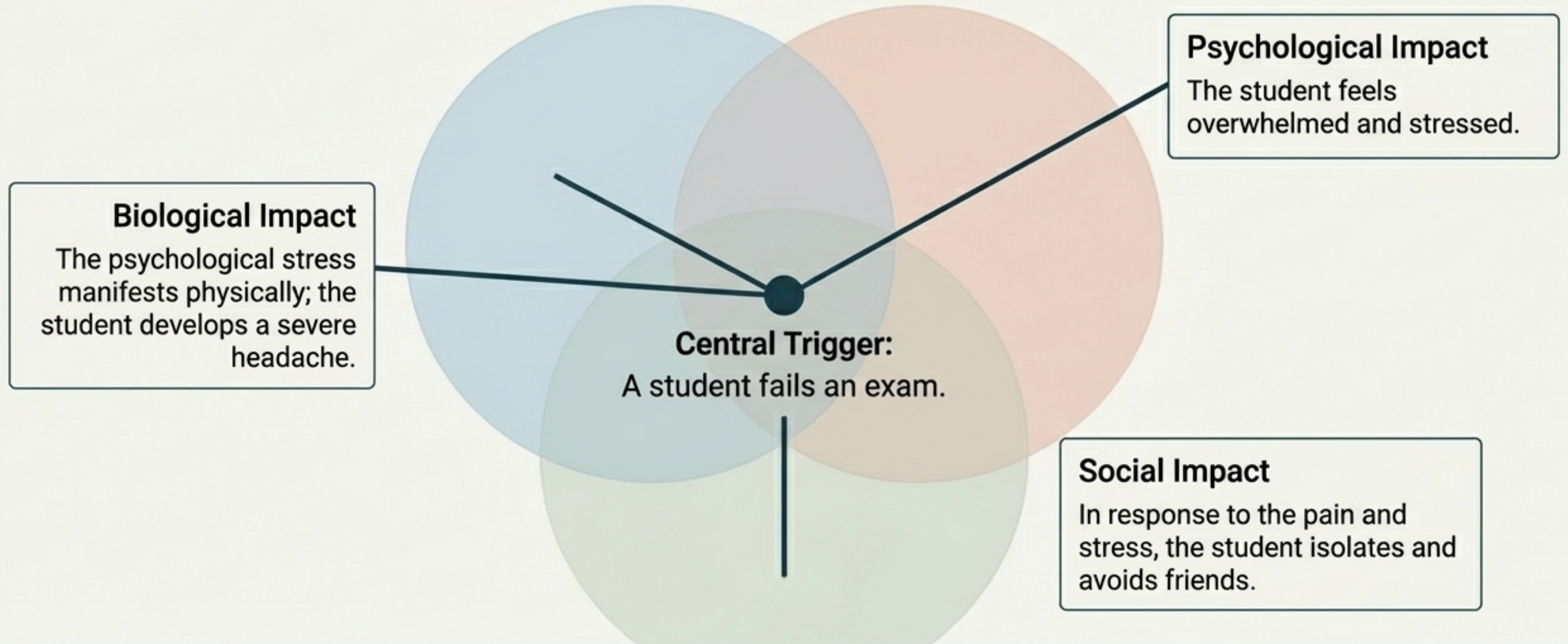
The Biological Cost of Psychological Strain



The Biopsychosocial Model: A Multi-Dimensional Framework



The Cascade Effect of a Single Event



Takeaway: An event in one dimension instantly creates symptoms in the other two.

The Clinical Divergence: Why Psychology Dictates Outcomes

Context: Two patients diagnosed with the exact same illness.



Patient A



Patient B

Anxious state + Unsupported environment.

Calm state + Supported emotionally (family/friends).

Weakened biological response leading to a slower recovery.

Optimized biological response leading to a faster recovery.

Conclusion: Psychological factors directly dictate healing speeds, treatment compliance, and overall quality of life.

When Emotion Dictates Harmful Behaviors

Step 1: The Sensation

The patient experiences physical pain.

Step 2: The Emotion

The pain generates a profound fear of further injury.

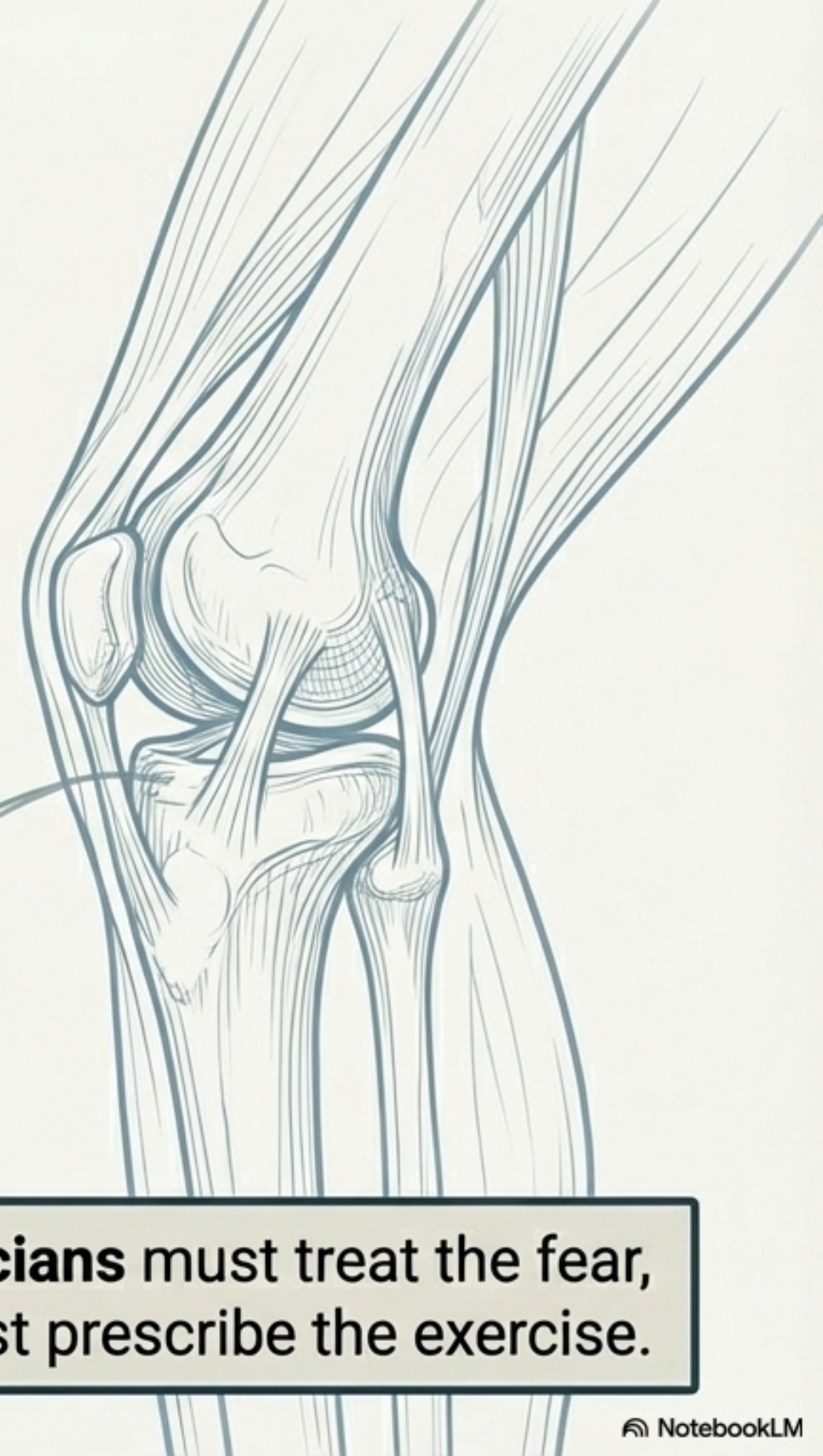
Step 3: The Behavior

Driven by fear, the patient avoids necessary rehabilitation exercises.

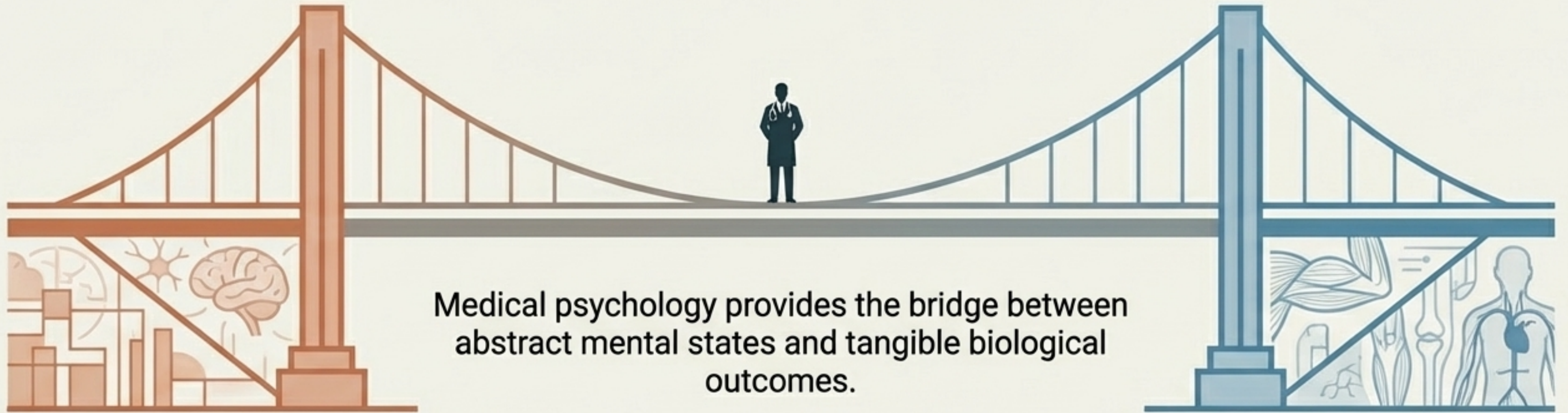
Step 4: The Outcome

The lack of movement weakens overall health and severely slows recovery.

Physicians must treat the fear, not just prescribe the exercise.



The Holistic Physician: Bridging Mind and Body



01.

Actively recognize physical signs of underlying stress or anxiety.

02.

Consider psychological factors as critical variables in treatment plans.

03.

Provide comprehensive care that optimizes both emotional resilience and biological healing.

The Imperative for Modern Medicine



You are training to be a physician. Understanding how stress and emotions alter the human body is not a secondary skill—it is central to your ability to heal.

Consider: How does a patient's stress physically alter their baseline?

Define: Why will your understanding of medical psychology make you a fundamentally better doctor?