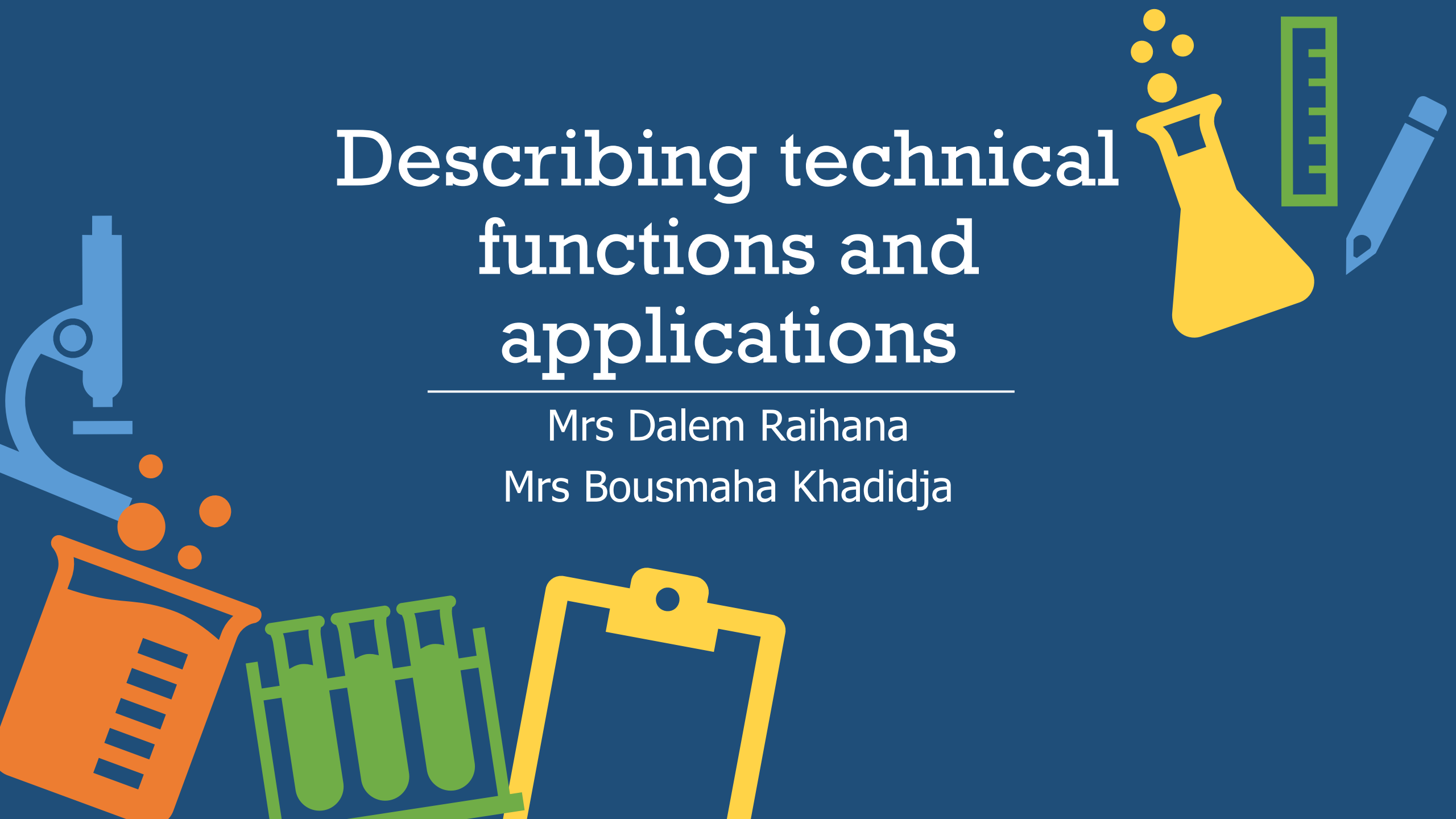


# Describing technical functions and applications

---

Mrs Dalem Raihana

Mrs Bousmaha Khadidja



# Think about two or three products you use regularly and discuss the following questions.

- • What are the main functions of the products? (What do they do?)
- • What are their different applications? (What are they used for?)
- **Examples:** mobile phones , electric drill/screwdriver handsets,,,,



# GPS

- What do you know about **Global Positioning System (GPS)** devices? In pairs, describe their main function , and give some examples of different applications of GPS devices.
- What do you know about the origins of GPS?

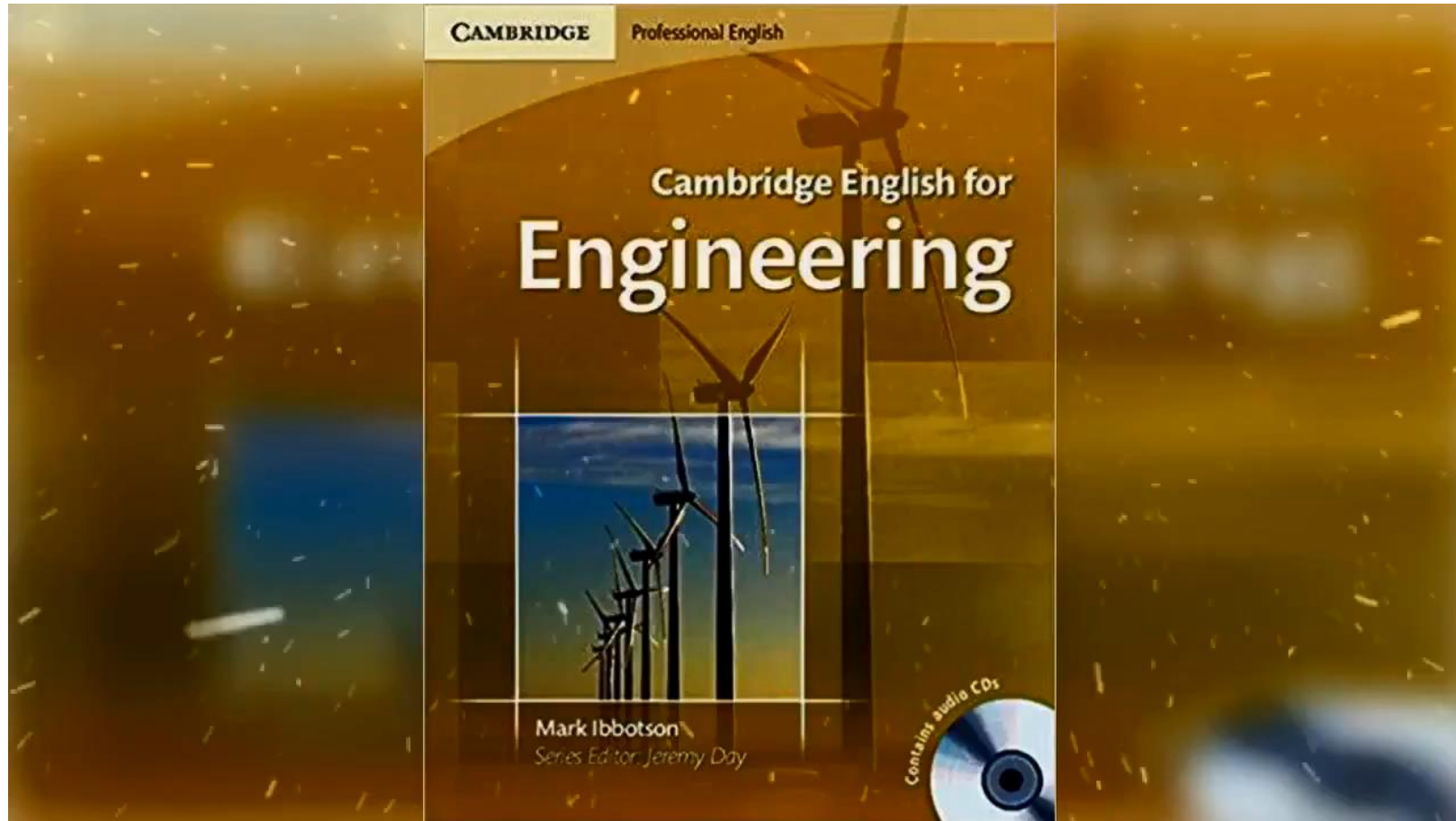
# Answers

- 1 navigation
- 2 drift
- 3 (monitoring) delivery vehicles
- 4 man overboard
- 5 (finding) stolen cars
- 6 innovative uses of



# Listening Script

<https://streamable.com/zta94s>



# Keys

- 1 navigation
- 2 (monitoring) delivery vehicles
- 3 (finding) stolen cars
- 4 drift
- 5 man overboard
- 6 innovative uses of

## Exercise 02:

Complete the following extracts from the discussion with **words** that come from **use**.

- 1-Then you've got associated applications, **uses** that are related to navigating ...
- 2-... tracking systems you can **use** for monitoring delivery vehicles ...
- 3-... from the end **user** point of view, accuracy is no longer the main selling point. Most devices are accurate enough. The key is to make them more **usefull** .



# Answers

- 1 uses
- 2 use
- 3 user's;
- useful

## Excercise03:

Match the GPS applications (1-6) to the descriptions (a-f).

1 topographical surveying	A- navigation and safety at sea
2-geological exploration	B- setting out positions and Levels of new structures
3-civil engineering	C- mapping surface features
4-avionics equipment	D-applications in mining and the oil industry
5-maritime applications	E-highway navigation and vehicle tracking
6-GPS in cars and trucks	F- air traffic control, navigation and autopilot systems

```
graph LR; 1[1 topographical surveying] --> C[C- mapping surface features]; 2[2-geological exploration] --> B[B- setting out positions and Levels of new structures]; 3[3-civil engineering] --> A[A- navigation and safety at sea]; 4[4-avionics equipment] --> D[D-applications in mining and the oil industry]; 5[5-maritime applications] --> E[E-highway navigation and vehicle tracking]; 6[6-GPS in cars and trucks] --> F[F- air traffic control, navigation and autopilot systems];
```

# Answers

• 2 d

3 b

4 f

5 a

6 e

In pairs, practice explaining **the applications of GPS** in Exercise 3 to a colleague who has limited knowledge of the devices using the following phrases.

used for -ing used to useful for another / a similar use

## Exercise 04:

**Complete** the following extracts from the conversation by **underlining** the **correct words** .

- ... there's a setting on the GPS that **allows/prevents** it to detect the movement ...
- 2 ... an alarm sounds to warn you, and **allows/prevents** the boat from drifting unnoticed.
- 3 ... and **enables/ensures** that you don't lose track of where you were, which then **enables/ensures** you to turn round and come back to the same point ...

# Answers:

- 1 allows
- 2 prevents
- 3 ensures; enables

Match the words in Exercise 4a to the synonyms.

- 1 - \_\_\_\_\_ = makes sure
- 2 \_\_\_\_\_ / \_\_\_\_\_ = permits
- 3 \_\_\_\_\_ = stops

# Answers:

- 1 ensures
- 2 allows/enables
- 3 prevent



**Complete** the following extract from the user's manual of a GPS device using the **verbs in Exercise 4**. Sometimes, **more than one answer** is possible.

## INTRODUCTION

The core function of your GPS receiver is to (1) \_\_\_\_\_ you to locate your precise geographical position. To (2) \_\_\_\_\_ the device to function, it receives at least three signals simultaneously from the GPS constellation - 30 dedicated satellites which (3) \_\_\_\_\_ receivers can function anywhere on earth. To (4) \_\_\_\_\_ extremely precise positioning and (5) \_\_\_\_\_ errors from occurring due to external factors, this device is designed to receive four separate signals (see enhanced system accuracy on page 18).

# Task :

- In pairs, explain the **main functions** and **applications** of **a product** made by your company or **a product you know about**. Student A, you are an engineering manager; Student B, you are a new employee. Use the language from this section and the phrases in the box. Swap roles and practise again.

Thank you see  
you next session

